

For Research Use Only

Human IgG Lambda Light Chain Polyclonal antibody

Catalog Number: 20758-1-AP

1 Publications



Basic Information

Catalog Number: 20758-1-AP	GenBank Accession Number: BC007782	Purification Method: Antigen affinity purification
Size: 150ul , Concentration: 350 ug/ml by Nanodrop and 240 ug/ml by Bradford method using BSA as the standard;	GeneID (NCBI): 3537	Recommended Dilutions: WB 1:500-1:2000 IHC 1:50-1:500 IF-P 1:200-1:800
Source: Rabbit	Full Name: immunoglobulin lambda constant 1 (Mcg marker)	
Isotype: IgG	Calculated MW: 233 aa, 25 kDa	
Immunogen Catalog Number: AG14693	Observed MW: 25 kDa	

Applications

Tested Applications: WB, IHC, IF-P, ELISA	Positive Controls: WB : human plasma tissue, IHC : human tonsillitis tissue, IF-P : human tonsillitis tissue,
Cited Applications: IHC, IF	
Species Specificity: human	
Note-IHC: suggested antigen retrieval with TE buffer pH 9.0; (*) Alternatively, antigen retrieval may be performed with citrate buffer pH 6.0	

Background Information

This antibody detects the lambda light chain of human IgG.

Notable Publications

Author	Pubmed ID	Journal	Application
Chuansong Quan	37250798	iScience	IHC,IF

Storage

Storage:
Store at -20°C. Stable for one year after shipment.
Storage Buffer:
PBS with 0.02% sodium azide and 50% glycerol pH 7.3.
Aliquoting is unnecessary for -20°C storage

*** 20ul sizes contain 0.1% BSA

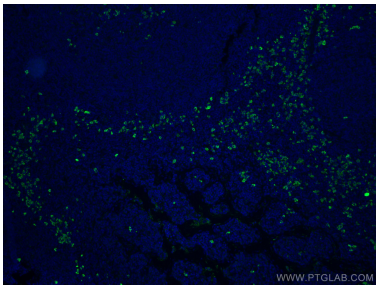
For technical support and original validation data for this product please contact:
T: 1 (888) 4PTGLAB (1-888-478-4522) (toll free in USA), or 1(312) 455-8498 (outside USA)
E: proteintech@ptglab.com
W: ptglab.com

This product is exclusively available under Proteintech Group brand and is not available to purchase from any other manufacturer.

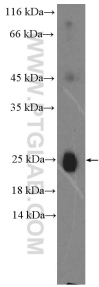
Selected Validation Data



Immunohistochemical analysis of paraffin-embedded human tonsillitis tissue slide using 20758-1-AP (Human IgG Lambda Light Chain antibody) at dilution of 1:200 (under 4x lens). Heat mediated antigen retrieval with Tris-EDTA buffer (pH 9.0).



Immunofluorescent analysis of (4% PFA) fixed human tonsillitis tissue using Human IgG Lambda Light Chain antibody (20758-1-AP) at dilution of 1:400 and CoraLite®488-Conjugated Goat Anti-Rabbit IgG(H+L).



human plasma were subjected to SDS PAGE followed by western blot with 20758-1-AP (Human IgG Lambda Light Chain antibody) at dilution of 1:1000 incubated at room temperature for 1.5 hours.