

For Research Use Only

TMEM126A Polyclonal antibody, PBS Only

Catalog Number: 20759-1-PBS



Basic Information

Catalog Number:

20759-1-PBS

Size:

100ug, Concentration: 1 mg/ml by Nanodrop;

Source:

Rabbit

Isotype:

IgG

Immunogen Catalog Number:

AG14705

GenBank Accession Number:

BC007875

GeneID (NCBI):

84233

UNIPROT ID:

Q9H061

Full Name:

transmembrane protein 126A

Calculated MW:

195 aa, 22 kDa

Observed MW:

20-25 kDa

Purification Method:

Antigen affinity purification

Applications

Tested Applications:

WB, IF/ICC, Indirect ELISA

Species Specificity:

human

Background Information

TMEM126A is a mitochondrial inner membrane protein that is enriched in the cristae. TMEM126A is necessary for Complex I assembly or stability. Complex I (CI) is the largest enzyme of the mitochondrial respiratory chain, and its defects are the main cause of mitochondrial disease.

Storage

Storage:

Store at -80°C.

Storage Buffer:

PBS only, pH7.3

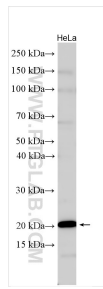
For technical support and original validation data for this product please contact:

T: 1 (888) 4PTGLAB (1-888-478-4522) (toll free in USA), or 1(312) 455-8498 (outside USA)

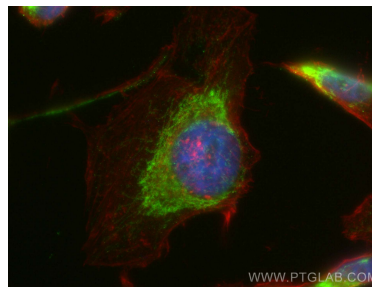
E: proteintech@ptglab.com
W: ptglab.com

This product is exclusively available under Proteintech Group brand and is not available to purchase from any other manufacturer.

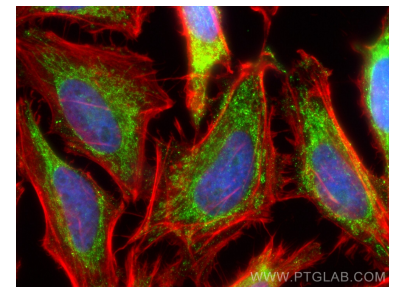
Selected Validation Data



Various lysates were subjected to SDS PAGE followed by western blot with 20759-1-AP (TMEM126A antibody) at dilution of 1:600 incubated at room temperature for 1.5 hours. This data was developed using the same antibody clone with 20759-1-PBS in a different storage buffer formulation.



Immunofluorescent analysis of (4% PFA) fixed HeLa cells using TMEM126A antibody (20759-1-AP) at dilution of 1:200 and Coralite@488-Conjugated AffiniPure Goat Anti-Rabbit IgG(H+L) (SA00013-2), CL594-phalloidin (red). This data was developed using the same antibody clone with 20759-1-PBS in a different storage buffer formulation.



Immunofluorescent analysis of (4% PFA) fixed HeLa cells using TMEM126A antibody (20759-1-AP) at dilution of 1:200 and Coralite@488-Conjugated AffiniPure Goat Anti-Rabbit IgG(H+L) (SA00013-2), CL594-Phalloidin (red). This data was developed using the same antibody clone with 20759-1-PBS in a different storage buffer formulation.