

For Research Use Only

CAPRIN2 Polyclonal antibody

Catalog Number: 20766-1-AP

Featured Product

2 Publications



Basic Information

Catalog Number:

20766-1-AP

Size:

150ul, Concentration: 400 ug/ml by Nanodrop and 287 ug/ml by Bradford method using BSA as the standard;

Source:

Rabbit

Isotype:

IgG

Immunogen Catalog Number:

AG14745

GenBank Accession Number:

BC007520

GeneID (NCBI):

65981

UNIPROT ID:

Q6IMN6

Full Name:

caprin family member 2

Calculated MW:

1127 aa, 126 kDa

Observed MW:

126-150 kDa

Purification Method:

Antigen affinity purification

Recommended Dilutions:

WB 1:500-1:1000

IP 0.5-4.0 ug for 1.0-3.0 mg of total protein lysate

IF/ICC 1:20-1:200

Applications

Tested Applications:

WB, IF/ICC, IP, ELISA

Cited Applications:

WB, IHC, IF

Species Specificity:

human, mouse, rat

Cited Species:

mouse, rat

Positive Controls:

WB : Y79 cells, SH-SY5Y cells, HEK-293 cells

IP : SH-SY5Y cells,

IF/ICC : HepG2 cells,

Notable Publications

Author	Pubmed ID	Journal	Application
Soma Dash	26177727	Dev Dyn	WB, IF
Soledad Báñez-López	35051932	Neuroendocrinology	IHC

Storage

Storage:

Store at -20°C. Stable for one year after shipment.

Storage Buffer:

PBS with 0.02% sodium azide and 50% glycerol pH 7.3.

Aliquoting is unnecessary for -20°C storage

*** 20ul sizes contain 0.1% BSA

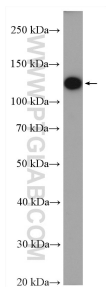
For technical support and original validation data for this product please contact:

T: 1 (888) 4PTGLAB (1-888-478-4522) (toll free in USA), or 1(312) 455-8498 (outside USA)

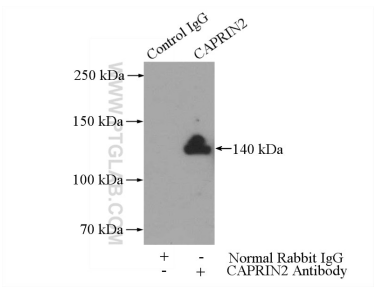
E: proteintech@ptglab.com
W: ptglab.com

This product is exclusively available under Proteintech Group brand and is not available to purchase from any other manufacturer.

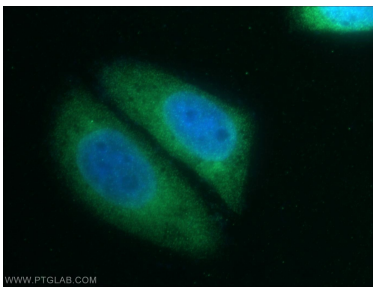
Selected Validation Data



Y79 cells were subjected to SDS PAGE followed by western blot with 20766-1-AP (CAPRIN2 antibody) at dilution of 1:600 incubated at room temperature for 1.5 hours.



IP result of anti-CAPRIN2 (IP:20766-1-AP, 4ug; Detection:20766-1-AP 1:300) with SH-SY5Y cells lysate 3000ug.



Immunofluorescent analysis of HepG2 cells using 20766-1-AP (CAPRIN2 antibody) at dilution of 1:50 and Alexa Fluor 488-conjugated Goat Anti-Rabbit IgG(H+L).