

For Research Use Only

CAPRIN2 Polyclonal antibody, PBS Only

Catalog Number: 20766-1-PBS

Featured Product



Basic Information

Catalog Number:

20766-1-PBS

Size:

100ug, Concentration: 1 mg/ml by Nanodrop;

Source:

Rabbit

Isotype:

IgG

Immunogen Catalog Number:

AG14745

GenBank Accession Number:

BC007520

GeneID (NCBI):

65981

UNIPROT ID:

Q6IMN6

Full Name:

caprin family member 2

Calculated MW:

1127 aa, 126 kDa

Observed MW:

126-150 kDa

Purification Method:

Antigen affinity purification

Applications

Tested Applications:

WB, IF/ICC, IP, Indirect ELISA

Species Specificity:

human, mouse, rat

Storage

Storage:

Store at -80°C.

Storage Buffer:

PBS only, pH7.3

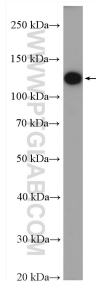
For technical support and original validation data for this product please contact:

T: 1 (888) 4PTGLAB (1-888-478-4522) (toll free in USA), or 1(312) 455-8498 (outside USA)

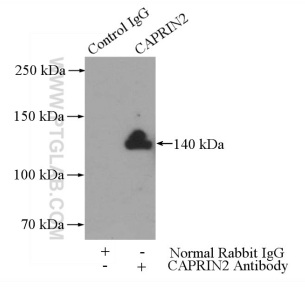
E: proteintech@ptglab.com
W: ptglab.com

This product is exclusively available under Proteintech Group brand and is not available to purchase from any other manufacturer.

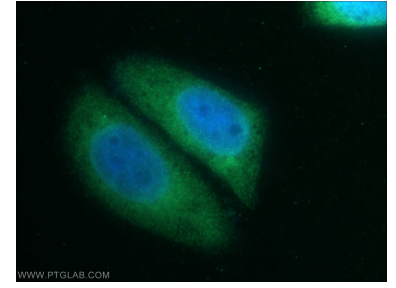
Selected Validation Data



Y79 cells were subjected to SDS PAGE followed by western blot with 20766-1-AP (CAPRIN2 antibody) at dilution of 1:600 incubated at room temperature for 1.5 hours. This data was developed using the same antibody clone with 20766-1-PBS in a different storage buffer formulation.



IP result of anti-CAPRIN2 (IP:20766-1-AP, 4 μ g; Detection:20766-1-AP 1:300) with SH-SY5Y cells lysate 3000 μ g. This data was developed using the same antibody clone with 20766-1-PBS in a different storage buffer formulation.



Immunofluorescent analysis of HepG2 cells using 20766-1-AP (CAPRIN2 antibody) at dilution of 1:50 and Alexa Fluor 488-conjugated AffiniPure Goat Anti-Rabbit IgG(H+L). This data was developed using the same antibody clone with 20766-1-PBS in a different storage buffer formulation.