

For Research Use Only

HPDL Polyclonal antibody

Catalog Number: 20777-1-AP



Basic Information

Catalog Number: 20777-1-AP	GenBank Accession Number: BC007293	Purification Method: Antigen affinity purification
Size: 150ul , Concentration: 300 µg/ml by Nanodrop and 247 µg/ml by Bradford method using BSA as the standard;	GeneID (NCBI): 84842	Recommended Dilutions: WB 1:1000-1:4000 IHC 1:20-1:200 IF 1:10-1:100
Source: Rabbit	Full Name: 4-hydroxyphenylpyruvate dioxygenase-like	
Isotype: IgG	Calculated MW: 371 aa, 39 kDa	
Immunogen Catalog Number: AG14773	Observed MW: 35-39 kDa	

Applications

Tested Applications:
IF, IHC, WB, ELISA

Species Specificity:
human

Note-IHC: suggested antigen retrieval with TE buffer pH 9.0; (*) Alternatively, antigen retrieval may be performed with citrate buffer pH 6.0

Positive Controls:

WB : HepG2 cells, L02 cells

IHC : human stomach tissue, human colon tissue

IF : HepG2 cells,

Background Information

Storage

Storage:

Store at -20°C. Stable for one year after shipment.

Storage Buffer:

PBS with 0.02% sodium azide and 50% glycerol pH 7.3.

Aliquoting is unnecessary for -20°C storage

*** 20ul sizes contain 0.1% BSA

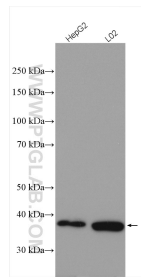
For technical support and original validation data for this product please contact:

T: 1 (888) 4PTGLAB (1-888-478-4522) (toll free in USA), or 1(312) 455-8498 (outside USA)

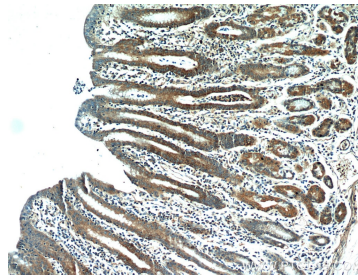
E: proteintech@ptglab.com
W: ptglab.com

This product is exclusively available under Proteintech Group brand and is not available to purchase from any other manufacturer.

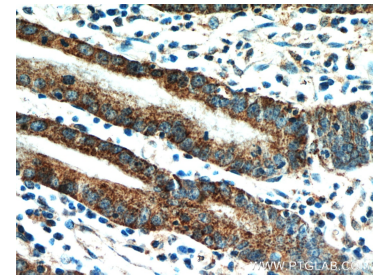
Selected Validation Data



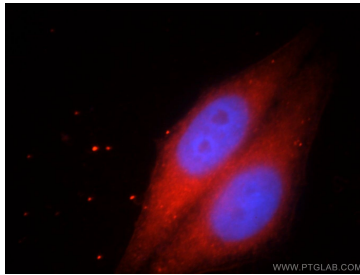
Various lysates were subjected to SDS PAGE followed by western blot with 20777-1-AP (HPDL antibody) at dilution of 1:2000 incubated at room temperature for 1.5 hours.



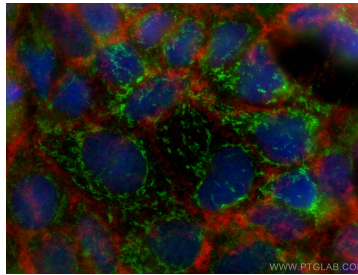
Immunohistochemical analysis of paraffin-embedded human stomach using 20777-1-AP (HPDL antibody) at dilution of 1:50 (under 10x lens).



Immunohistochemical analysis of paraffin-embedded human stomach using 20777-1-AP (HPDL antibody) at dilution of 1:50 (under 40x lens).



Immunofluorescent analysis of HepG2 cells, using HPDL antibody 20777-1-AP at 1:25 dilution and Rhodamine-labeled goat anti-rabbit IgG (red). Blue pseudocolor = DAPI (fluorescent DNA dye).



Immunofluorescent analysis of (4% PFA) fixed Caco-2 cells using HPDL antibody (20777-1-AP) at dilution of 1:200 and Coralite@488-Conjugated AffiniPure Goat Anti-Rabbit IgG(H+L), CL594-Phalloidin (red).