

For Research Use Only

WDR55 Polyclonal antibody

Catalog Number: 20786-1-AP



Basic Information

Catalog Number: 20786-1-AP	GenBank Accession Number: BC002482	Purification Method: Antigen affinity purification
Size: 150ul , Concentration: 1000 ug/ml by Nanodrop and 400 ug/ml by Bradford method using BSA as the standard;	GeneID (NCBI): 54853	Recommended Dilutions: WB 1:2000-1:10000
Source: Rabbit	UNIPROT ID: Q9H6Y2	IP 0.5-4.0 ug for 1.0-3.0 mg of total protein lysate
Isotype: IgG	Full Name: WD repeat domain 55	IHC 1:50-1:500
Immunogen Catalog Number: AG14241	Calculated MW: 383 aa, 42 kDa	IF/ICC 1:50-1:500
	Observed MW: 42-50 kDa	

Applications

Tested Applications: WB, IHC, IF/ICC, IP, ELISA	Positive Controls:
Species Specificity: human	WB : HeLa cells, Jurkat cells
Note-IHC: suggested antigen retrieval with TE buffer pH 9.0; (*) Alternatively, antigen retrieval may be performed with citrate buffer pH 6.0	IP : HeLa cells,
	IHC : human liver cancer tissue,
	IF/ICC : HepG2 cells,

Background Information

WD repeat domain 55 (WDR55) also named as, FLJ20195, is a 383 amino acid protein, which contains seven WD repeats and belongs to the WD repeat WDR55 family. WDR55 localizes in the nucleus and cytoplasm. WDR55 acts as a modulator of rRNA synthesis and play a central role in organogenesis.

Storage

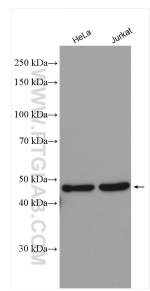
Storage:
Store at -20°C. Stable for one year after shipment.
Storage Buffer:
PBS with 0.02% sodium azide and 50% glycerol pH 7.3.
Aliquoting is unnecessary for -20°C storage

*** 20ul sizes contain 0.1% BSA

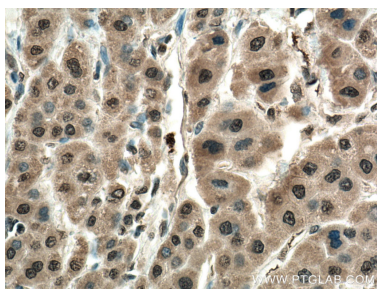
For technical support and original validation data for this product please contact:
T: 1 (888) 4PTGLAB (1-888-478-4522) (toll free in USA), or 1(312) 455-8498 (outside USA)
E: proteintech@ptglab.com
W: ptglab.com

This product is exclusively available under Proteintech Group brand and is not available to purchase from any other manufacturer.

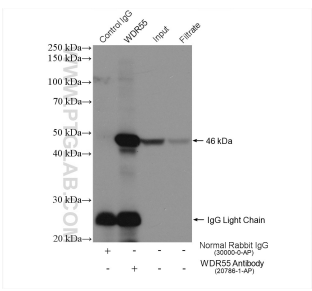
Selected Validation Data



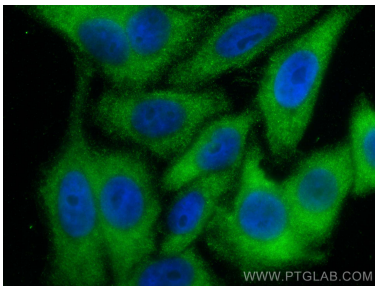
Various lysates were subjected to SDS PAGE followed by western blot with 20786-1-AP (WDR55 antibody) at dilution of 1:5000 incubated at room temperature for 1.5 hours.



Immunohistochemical analysis of paraffin-embedded human liver cancer tissue slide using 20786-1-AP (WDR55 antibody) at dilution of 1:200 (under 40x lens. Heat mediated antigen retrieval with Tris-EDTA buffer (pH 9.0).



IP result of anti-WDR55 (IP:20786-1-AP, 4ug; Detection:20786-1-AP 1:1000) with HeLa cells lysate 680 ug.



Immunofluorescent analysis of (-20°C Ethanol) fixed HepG2 cells using WDR55 antibody (20786-1-AP) at dilution of 1:200 and CoraLite®488-Conjugated AffiniPure Goat Anti-Rabbit IgG(H+L) (SA00013-2).