

For Research Use Only

# KIFC1 Polyclonal antibody

Catalog Number: 20790-1-AP

Featured Product

11 Publications



## Basic Information

### Catalog Number:

20790-1-AP

### Size:

150ul, Concentration: 850 ug/ml by Nanodrop and 400 ug/ml by Bradford method using BSA as the standard;

### Source:

Rabbit

### Isotype:

IgG

### Immunogen Catalog Number:

AG14492

### GenBank Accession Number:

BC000712

### GeneID (NCBI):

3833

### UNIPROT ID:

Q9BW19

### Full Name:

kinesin family member C1

### Calculated MW:

673 aa, 74 kDa

### Observed MW:

55-70 kDa

### Purification Method:

Antigen affinity purification

### Recommended Dilutions:

WB 1:500-1:1000

IHC 1:50-1:500

IF/ICC 1:10-1:100

## Applications

### Tested Applications:

WB, IHC, IF/ICC, ELISA

### Cited Applications:

WB, IHC, IF, Peptide array

### Species Specificity:

human, mouse, rat

### Cited Species:

human, mouse, rat

**Note-IHC: suggested antigen retrieval with TE buffer pH 9.0; (\*) Alternatively, antigen retrieval may be performed with citrate buffer pH 6.0**

### Positive Controls:

**WB** : rat testis tissue, HeLa cells, mouse testis tissue, NIH/3T3 cells

**IHC** : human bowen disease, human placenta tissue, human testis tissue

**IF/ICC** : Hela cells, HepG2 cells

## Background Information

KIFC1 is a molecular motor protein belonging to the kinesin-14 family that has motor domains at the C-terminus. KIFC1 is widely distributed, with highest expression in testis and participating in acrosome biogenesis and vesicle transport. It is also abundant in ovary, spleen, and liver. KIFC1 proteins are generally localized in the perinuclear region, and have been found to be involved chromosome alignment, congression and intracellular DNA transport. This antibody was raised against the C-terminal region of human KIFC1 protein, and recognizes 55-70 kDa of endogenous KIFC1 protein in multiple tissue lysates. (12826589, 15236353, 23543461)

## Notable Publications

Author	Pubmed ID	Journal	Application
Anusriti Sabui	36245925	Front Mol Neurosci	
Erlei Zhi	27690105	Genes (Basel)	WB,IF
Si-Hyung Lee	29042452	FASEB J	IF

## Storage

### Storage:

Store at -20°C. Stable for one year after shipment.

### Storage Buffer:

PBS with 0.02% sodium azide and 50% glycerol pH 7.3.

Aliquoting is unnecessary for -20°C storage

\*\*\* 20ul sizes contain 0.1% BSA

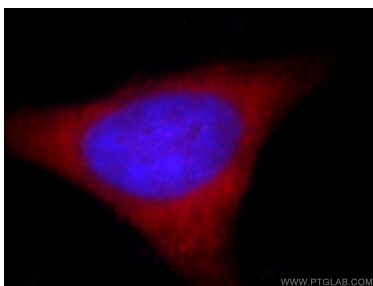
For technical support and original validation data for this product please contact:

T: 1 (888) 4PTGLAB (1-888-478-4522) (toll free in USA), or 1(312) 455-8498 (outside USA)

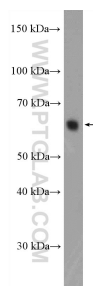
E: [proteintech@ptglab.com](mailto:proteintech@ptglab.com)  
W: [ptglab.com](http://ptglab.com)

This product is exclusively available under Proteintech Group brand and is not available to purchase from any other manufacturer.

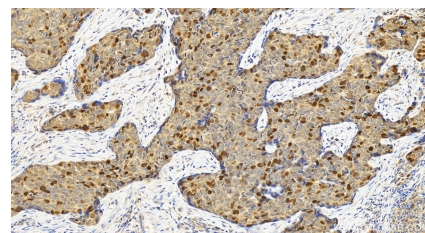
## Selected Validation Data



Immunofluorescent analysis of HeLa cells, using KIFC1 antibody 20790-1-AP at 1:25 dilution and Rhodamine-labeled goat anti-rabbit IgG (red). Blue pseudocolor = DAPI (fluorescent DNA dye).



rat testis tissue were subjected to SDS PAGE followed by western blot with 20790-1-AP (KIFC1 Antibody) at dilution of 1:600 incubated at room temperature for 1.5 hours.



Immunohistochemical analysis of paraffin-embedded human Bowen disease slide using 20790-1-AP (KIFC1 antibody) at dilution of 1:200 (under 20x lens). Heat mediated antigen retrieval with Tris-EDTA buffer (pH 9.0).