

For Research Use Only

C7orf50 Polyclonal antibody

Catalog Number: 20797-1-AP

2 Publications



Basic Information

Catalog Number:

20797-1-AP

Size:

150ul, Concentration: 650 ug/ml by Nanodrop and 633 ug/ml by Bradford method using BSA as the standard;

Source:

Rabbit

Isotype:

IgG

Immunogen Catalog Number:

AG14709

GenBank Accession Number:

BC006224

GeneID (NCBI):

84310

UNIPROT ID:

Q9BRJ6

Full Name:

chromosome 7 open reading frame 50

Calculated MW:

194 aa, 22 kDa

Observed MW:

22 kDa

Purification Method:

Antigen affinity purification

Recommended Dilutions:

WB 1:500-1:4000

IHC 1:50-1:500

IF/ICC 1:50-1:500

Applications

Tested Applications:

WB, IHC, IF/ICC, ELISA

Cited Applications:

WB

Species Specificity:

human

Cited Species:

human

Note-IHC: suggested antigen retrieval with TE buffer pH 9.0; (*) Alternatively, antigen retrieval may be performed with citrate buffer pH 6.0

Positive Controls:

WB : HEK-293T cells, Jurkat cells, L02 cells

IHC : human stomach tissue,

IF/ICC : L02 cells,

Background Information

C7orf50 (Chromosome 7, Open Reading Frame 50) is ubiquitously expressed in the kidneys, brain, fat, prostate, spleen, among 22 other tissues and demonstrates low tissue specificity.

Notable Publications

Author	Pubmed ID	Journal	Application
Koshi Imami	30220558	Mol Cell	WB
Amani Issa	38858088	Life Sci Alliance	WB

Storage

Storage:

Store at -20°C. Stable for one year after shipment.

Storage Buffer:

PBS with 0.02% sodium azide and 50% glycerol pH 7.3.

Aliquoting is unnecessary for -20°C storage

*** 20ul sizes contain 0.1% BSA

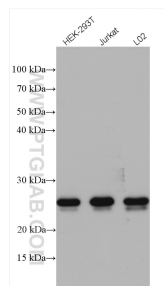
For technical support and original validation data for this product please contact:

T: 1 (888) 4PTGLAB (1-888-478-4522) (toll free in USA), or 1(312) 455-8498 (outside USA)

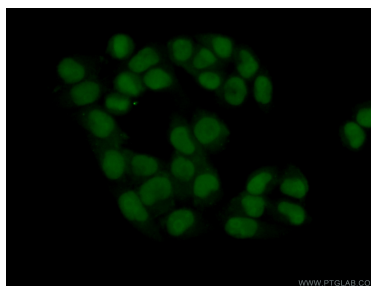
E: proteintech@ptglab.com
W: ptglab.com

This product is exclusively available under Proteintech Group brand and is not available to purchase from any other manufacturer.

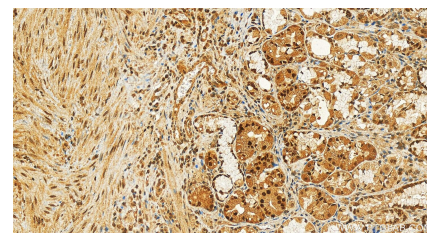
Selected Validation Data



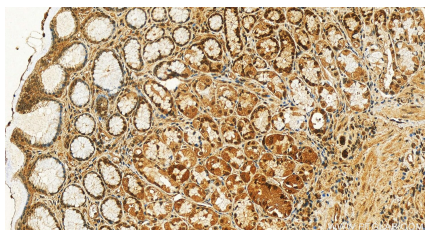
Various lysates were subjected to SDS PAGE followed by western blot with 20797-1-AP (C7orf50 antibody) at dilution of 1:2000 incubated at room temperature for 1.5 hours.



Immunofluorescent analysis of (4% PFA) fixed L02 cells using 20797-1-AP (C7orf50 antibody) at dilution of 1:50 and Alexa Fluor 488-conjugated AffiniPure Goat Anti-Rabbit IgG(H+L).



Immunohistochemical analysis of paraffin-embedded human normal stomach slide using 20797-1-AP (C7orf50 antibody) at dilution of 1:200 (under 20x lens). Heat mediated antigen retrieval with Tris-EDTA buffer (pH 9.0).



Immunohistochemical analysis of paraffin-embedded human normal stomach slide using 20797-1-AP (C7orf50 antibody) at dilution of 1:200 (under 20x lens). Heat mediated antigen retrieval with Tris-EDTA buffer (pH 9.0).