

For Research Use Only

CLASP1 Polyclonal antibody

Catalog Number: 20803-1-AP



Basic Information

Catalog Number:

20803-1-AP

Size:

150ul, Concentration: 300 ug/ml by Nanodrop and 227 ug/ml by Bradford method using BSA as the standard;

Source:

Rabbit

Isotype:

IgG

Immunogen Catalog Number:

AG14724

GenBank Accession Number:

BC112940

GeneID (NCBI):

23332

UNIPROT ID:

Q7Z460

Full Name:

cytoplasmic linker associated protein 1

Calculated MW:

1538 aa, 169 kDa

Observed MW:

162 kDa

Purification Method:

Antigen affinity purification

Recommended Dilutions:

WB 1:500-1:3000

IP 0.5-4.0 ug for 1.0-3.0 mg of total protein lysate

IHC 1:50-1:500

Applications

Tested Applications:

WB, IP, IHC, ELISA

Species Specificity:

human, mouse, rat

Note-IHC: suggested antigen retrieval with TE buffer pH 9.0; (*) Alternatively, antigen retrieval may be performed with citrate buffer pH 6.0

Positive Controls:

WB: mouse brain tissue, HeLa cells, rat brain tissue, SH-SY5Y cells

IP: HeLa cells,

IHC: human testis tissue,

Background Information

CLASP1 is a member of CLASP family. Members of the CLASP family of proteins are involved in multiple MT-dependent processes, including Golgi complex organization and trafficking, kinetochore fiber dynamics and flux, mitotic spindle assembly, and the stabilization of MT plus ends near the cortex. CLASP proteins regulate MT dynamics by promoting MT rescue and suppressing MT catastrophe. Recent work showed that CLASP1 activity is required for proper positioning of the mitotic spindle in both the *C. elegans* embryo and mammalian cells. Recent work has also identified roles CLASP1 in the regulation of spindle positioning.

Storage

Storage:

Store at -20°C. Stable for one year after shipment.

Storage Buffer:

PBS with 0.02% sodium azide and 50% glycerol pH 7.3.

Aliquoting is unnecessary for -20°C storage

*** 20ul sizes contain 0.1% BSA

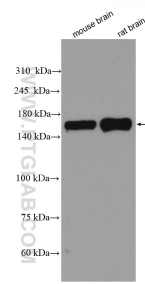
For technical support and original validation data for this product please contact:

T: 1 (888) 4PTGLAB (1-888-478-4522) (toll free in USA), or 1(312) 455-8498 (outside USA)

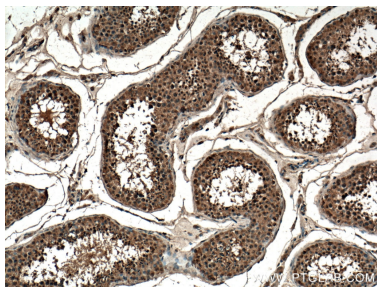
E: proteintech@ptglab.com
W: ptglab.com

This product is exclusively available under Proteintech Group brand and is not available to purchase from any other manufacturer.

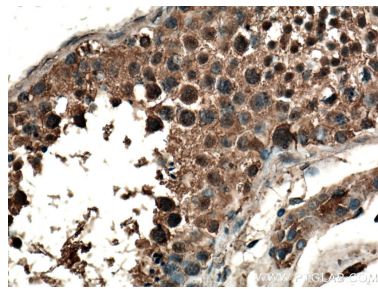
Selected Validation Data



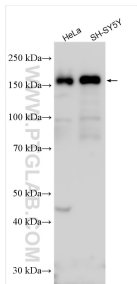
Various lysates were subjected to SDS PAGE followed by western blot with 20803-1-AP (CLASP1 antibody) at dilution of 1:1500 incubated at room temperature for 1.5 hours.



Immunohistochemical analysis of paraffin-embedded human testis tissue slide using 20803-1-AP (CLASP1 antibody) at dilution of 1:200 (under 10x lens. Heat mediated antigen retrieval with Tris-EDTA buffer (pH 9.0).



Immunohistochemical analysis of paraffin-embedded human testis tissue slide using 20803-1-AP (CLASP1 antibody) at dilution of 1:200 (under 40x lens. Heat mediated antigen retrieval with Tris-EDTA buffer (pH 9.0).



Various lysates were subjected to SDS PAGE followed by western blot with 20803-1-AP (CLASP1 antibody) at dilution of 1:2000 incubated at room temperature for 1.5 hours.



IP result of anti-CLASP1 (IP:20803-1-AP, 4ug; Detection:20803-1-AP 1:2000) with HeLa cells lysate 1750 ug.