

For Research Use Only

ZNF622 Polyclonal antibody

Catalog Number: 20804-1-AP



Basic Information

| | | |
|--|--|--|
| Catalog Number: 20804-1-AP | GenBank Accession Number: BC008752 | Purification Method: Antigen affinity purification |
| Size: 150ul , Concentration: 900 µg/ml by Nanodrop and 473 µg/ml by Bradford method using BSA as the standard; | GeneID (NCBI): 90441 | Recommended Dilutions: WB 1:1000-1:4000 IHC 1:20-1:200 IF 1:10-1:100 |
| Source: Rabbit | Full Name: zinc finger protein 622 | |
| Isotype: IgG | Calculated MW: 477 aa, 54 kDa | |
| Immunogen Catalog Number: AG14741 | Observed MW: 54 kDa | |

Applications

Tested Applications:

IF, IHC, WB, ELISA

Species Specificity:

human, mouse, rat

Note-IHC: suggested antigen retrieval with TE buffer pH 9.0; (*) Alternatively, antigen retrieval may be performed with citrate buffer pH 6.0

Positive Controls:

WB : HeLa cells, HEK-293 cells, human brain tissue, mouse lung tissue

IHC : human hepatocirrhosis tissue, human lung tissue

IF : HeLa cells, HepG2 cells

Background Information

Storage

Storage:

Store at -20°C. Stable for one year after shipment.

Storage Buffer:

PBS with 0.02% sodium azide and 50% glycerol pH 7.3.

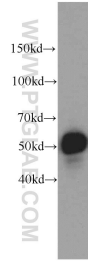
Aliquoting is unnecessary for -20°C storage

*** 20ul sizes contain 0.1% BSA

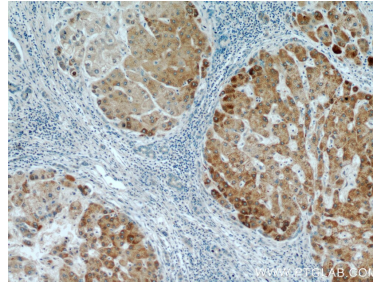
For technical support and original validation data for this product please contact:
T: 1 (888) 4PTGLAB (1-888-478-4522) (toll free in USA), or 1(312) 455-8498 (outside USA) E: proteintech@ptglab.com W: ptglab.com

This product is exclusively available under Proteintech Group brand and is not available to purchase from any other manufacturer.

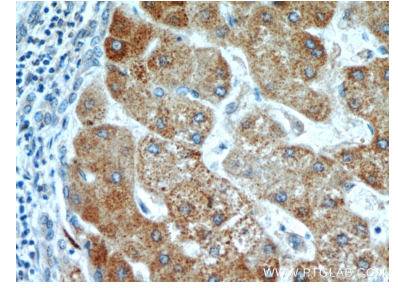
Selected Validation Data



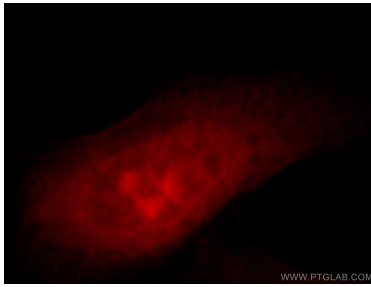
HeLa cells were subjected to SDS PAGE followed by western blot with 20804-1-AP (ZNF622 antibody) at dilution of 1:500 incubated at room temperature for 1.5 hours.



Immunohistochemical analysis of paraffin-embedded human hepatocirrhosis using 20804-1-AP (ZNF622 antibody) at dilution of 1:100 (under 10x lens).



Immunohistochemical analysis of paraffin-embedded human hepatocirrhosis using 20804-1-AP (ZNF622 antibody) at dilution of 1:100 (under 40x lens).



Immunofluorescent analysis of HeLa cells, using ZNF622 antibody 20804-1-AP at 1:25 dilution and Rhodamine-labeled goat anti-rabbit IgG (red).