

For Research Use Only

KDM1 Polyclonal antibody

Catalog Number: 20813-1-AP

Featured Product

7 Publications



Basic Information

Catalog Number: 20813-1-AP	GenBank Accession Number: BC040194	Purification Method: Antigen affinity purification
Size: 150ul, Concentration: 450 µg/ml by Nanodrop and 353 µg/ml by Bradford method using BSA as the standard;	GeneID (NCBI): 23028	Recommended Dilutions: WB 1:2000-1:16000 IP 0.5-4.0 ug for 1.0-3.0 mg of total protein lysate IHC 1:50-1:500
Source: Rabbit	Full Name: lysine (K)-specific demethylase 1	
Isotype: IgG	Calculated MW: 876 aa, 95 kDa	
Immunogen Catalog Number: AG14778	Observed MW: 110 kDa	

Applications

Tested Applications: FC, IHC, IP, WB, ELISA	Positive Controls: WB : MCF-7 cells, IP : HeLa cells, IHC : human lung cancer tissue,
Cited Applications: WB	
Species Specificity: human, mouse	
Cited Species: human, mouse	
Note-IHC: suggested antigen retrieval with TE buffer pH 9.0; (*) Alternatively, antigen retrieval may be performed with citrate buffer pH 6.0	

Background Information

Lysine specific demethylase 1 (LSD1/BHC110/KIAA0601/p110b/AOF2/KDM1) is an amine oxidase that catalyzes histone demethylation via a flavin adenine dinucleotide (FAD)-dependent oxidative reaction (PMID:19703393). This protein belongs to the flavin monoamine oxidase family. Its structure and function is conserved from yeast to human and it is typically associated to CoREST, a corepressor protein, and histone deacetylases HDAC1 and HDAC2. Human LSD1 consists of 852 amino acids and comprises an N-terminal SWIRM domain, involved in protein interactions, and a C-terminal amine oxidase domain, which contains an insertion that forms the CoREST interacting site (the so-called tower domain) (PMID:20164337). It has 2 isoforms produced by alternative splicing with the calculated molecular mass of 93-95 kDa and apparent molecular mass of 110 kDa.

Notable Publications

Author	Pubmed ID	Journal	Application
Miao Zhang	36175800	Int J Legal Med	WB
Buqing Ye	32449550	EMBO J	WB
Linyu Yan	34180153	Adv Sci (Weinh)	WB

Storage

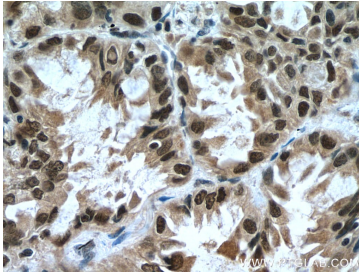
Storage:
Store at -20°C. Stable for one year after shipment.
Storage Buffer:
PBS with 0.02% sodium azide and 50% glycerol pH 7.3.
Aliquoting is unnecessary for -20°C storage

*** 20ul sizes contain 0.1% BSA

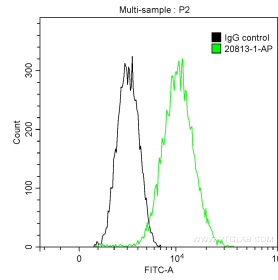
For technical support and original validation data for this product please contact:
T: 1 (888) 4PTGLAB (1-888-478-4522) (toll free in USA), or 1(312) 455-8498 (outside USA)
E: proteintech@ptglab.com
W: ptglab.com

This product is exclusively available under Proteintech Group brand and is not available to purchase from any other manufacturer.

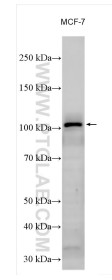
Selected Validation Data



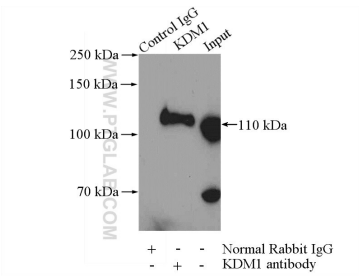
Immunohistochemical analysis of paraffin-embedded human lung cancer tissue slide using 20813-1-AP (KDM1 antibody) at dilution of 1:200 (under 40x lens). Heat mediated antigen retrieval with Tris-EDTA buffer (pH 9.0).



1×10^6 HeLa cells were intracellularly stained with 0.2 ug Anti-Human KDM1 (20813-1-AP) and CoraLite®488-Conjugated AffiniPure Goat Anti-Rabbit IgG(H+L) at dilution 1:1000 (green), and 0.2 ug Control Antibody. Cells were fixed with 90% MeOH.



MCF-7 cells were subjected to SDS PAGE followed by western blot with 20813-1-AP (KDM1 antibody) at dilution of 1:8000 incubated at room temperature for 1.5 hours.



IP Result of anti-KDM1 (IP:20813-1-AP, 4ug; Detection:20813-1-AP 1:600) with HeLa cells lysate 2000ug.