

For Research Use Only

PTDSS1 Polyclonal antibody

Catalog Number: 20820-1-AP



Basic Information

Catalog Number: 20820-1-AP	GenBank Accession Number: BC002376	Purification Method: Antigen affinity purification
Size: 150ul , Concentration: 550 ug/ml by Nanodrop;	GeneID (NCBI): 9791	Recommended Dilutions: WB 1:1000-1:8000
Source: Rabbit	UNIPROT ID: P48651	IHC 1:50-1:500
Isotype: IgG	Full Name: phosphatidylserine synthase 1	IF/ICC 1:50-1:500
Immunogen Catalog Number: AG14170	Calculated MW: 473 aa, 56 kDa	
	Observed MW: 38-40 kDa	

Applications

Tested Applications: WB, IHC, IF/ICC, ELISA	Positive Controls:
Species Specificity: human	WB : HEK-293 cells, unboiled HEK-293 cells, HeLa cells, unboiled HeLa cells
Note-IHC: suggested antigen retrieval with TE buffer pH 9.0; (*) Alternatively, antigen retrieval may be performed with citrate buffer pH 6.0	IHC : human placenta tissue,
	IF/ICC : HepG2 cells,

Background Information

PTDSS1 gene encodes the enzyme phosphatidylserine synthase 1 (PSS1), which catalyzes the production of phosphatidylserine (PS), a membrane phospholipid involved in different cellular processes such as development, cell signaling, apoptosis, and blood coagulation (PMID: 35224839). PTDSS1 is highly enriched in mitochondria-associated membranes (MAM) and is largely excluded from the bulk of the endoplasmic reticulum (ER). Low apparent molecular mass of 40 kDa compared with the size predicted was attributed to the exceptionally high content of hydrophobic amino acids in PSS1 (PMID: 10938271).

Storage

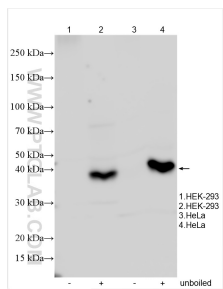
Storage:
Store at -20°C. Stable for one year after shipment.
Storage Buffer:
PBS with 0.02% sodium azide and 50% glycerol, pH7.3
Aliquoting is unnecessary for -20°C storage

*** 20ul sizes contain 0.1% BSA

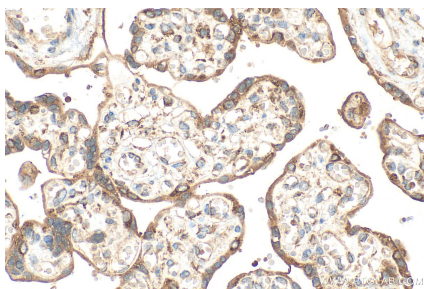
For technical support and original validation data for this product please contact:
T: 1 (888) 4PTGLAB (1-888-478-4522) (toll free in USA), or 1(312) 455-8498 (outside USA)
E: proteintech@ptglab.com
W: ptglab.com

This product is exclusively available under Proteintech Group brand and is not available to purchase from any other manufacturer.

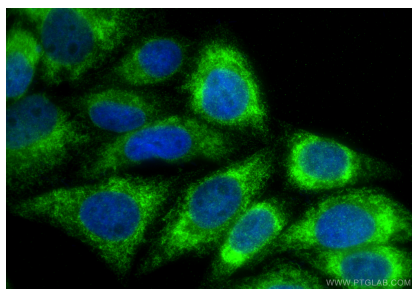
Selected Validation Data



Various lysates were subjected to SDS PAGE followed by western blot with 20820-1-AP (PTDSS1 antibody) at dilution of 1:4000 incubated at room temperature for 1.5 hours.



Immunohistochemical analysis of paraffin-embedded human placenta tissue slide using 20820-1-AP (PTDSS1 antibody) at dilution of 1:200 (under 40x lens). Heat mediated antigen retrieval with Tris-EDTA buffer (pH 9.0).



Immunofluorescent analysis of (4% PFA) fixed HepG2 cells using PTDS51 antibody (20820-1-AP) at dilution of 1:200 and CoraLite®488-Conjugated Goat Anti-Rabbit IgG(H+L) (SA00013-2).