

For Research Use Only

PTDSS1 Polyclonal antibody, PBS Only

Catalog Number:20820-1-PBS



Basic Information

Catalog Number: 20820-1-PBS	GenBank Accession Number: BC002376	Purification Method: Antigen affinity purification
Size: 100ug , Concentration: 1 mg/ml by Nanodrop;	GeneID (NCBI): 9791	
Source: Rabbit	UNIPROT ID: P48651	
Isotype: IgG	Full Name: phosphatidylserine synthase 1	
Immunogen Catalog Number: AG14170	Calculated MW: 473 aa, 56 kDa	
	Observed MW: 38-40 kDa	

Applications

Tested Applications:
WB, IHC, IF/ICC, Indirect ELISA

Species Specificity:
human

Background Information

PTDSS1 gene encodes the enzyme phosphatidylserine synthase 1 (PSS1), which catalyzes the production of phosphatidylserine (PS), a membrane phospholipid involved in different cellular processes such as development, cell signaling, apoptosis, and blood coagulation (PMID: 35224839). PTDSS1 is highly enriched in mitochondria-associated membranes (MAM) and is largely excluded from the bulk of the endoplasmic reticulum (ER). Low apparent molecular mass of 40 kDa compared with the size predicted was attributed to the exceptionally high content of hydrophobic amino acids in PSS1 (PMID: 10938271).

Storage

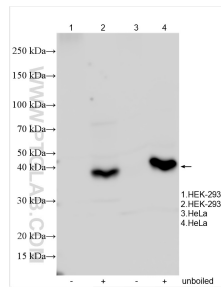
Storage:
Store at -80°C.

Storage Buffer:
PBS only, pH7.3

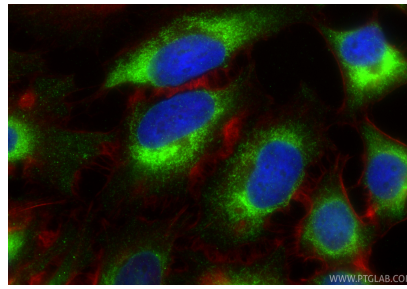
For technical support and original validation data for this product please contact:
T: 1 (888) 4PTGLAB (1-888-478-4522) (toll free in USA), or 1(312) 455-8498 (outside USA) E: proteintech@ptglab.com
W: ptglab.com

This product is exclusively available under Proteintech Group brand and is not available to purchase from any other manufacturer.

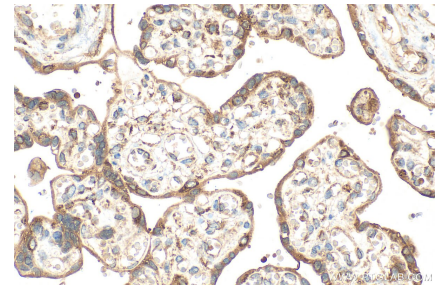
Selected Validation Data



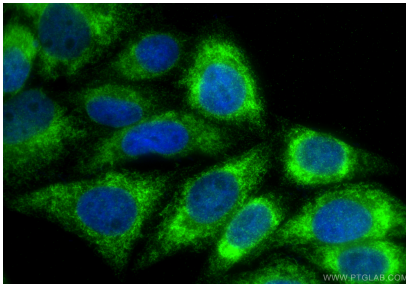
Various lysates were subjected to SDS PAGE followed by western blot with 20820-1-AP (PTDSS1 antibody) at dilution of 1:4000 incubated at room temperature for 1.5 hours. This data was developed using the same antibody clone with 20820-1-PBS in a different storage buffer formulation.



Immunofluorescent analysis of (-20°C Ethanol) fixed HeLa cells using PTDSS1 antibody (20820-1-AP) at dilution of 1:400 and CoraLite@488-Conjugated Goat Anti-Rabbit IgG(H+L) (SA00013-2), CL594-Phalloidin (red). This data was developed using the same antibody clone with 20820-1-PBS in a different storage buffer formulation.



Immunohistochemical analysis of paraffin-embedded human placenta tissue slide using 20820-1-AP (PTDSS1 antibody) at dilution of 1:200 (under 40x lens). Heat mediated antigen retrieval with Tris-EDTA buffer (pH 9.0). This data was developed using the same antibody clone with 20820-1-PBS in a different storage buffer formulation.



Immunofluorescent analysis of (4% PFA) fixed HepG2 cells using PTDSS1 antibody (20820-1-AP) at dilution of 1:200 and CoraLite@488-Conjugated Goat Anti-Rabbit IgG(H+L) (SA00013-2). This data was developed using the same antibody clone with 20820-1-PBS in a different storage buffer formulation.