

For Research Use Only

SGSM3 Polyclonal antibody, PBS Only

Catalog Number: 20825-1-PBS

Featured Product



Basic Information

Catalog Number:

20825-1-PBS

Size:

100ug, Concentration: 1 mg/ml by Nanodrop;

Source:

Rabbit

Isotype:

IgG

Immunogen Catalog Number:

AG14800

GenBank Accession Number:

BC008078

GeneID (NCBI):

27352

UNIPROT ID:

Q96HU1

Full Name:

small G protein signaling modulator 3

Calculated MW:

749 aa, 85 kDa

Observed MW:

85 kDa

Purification Method:

Antigen affinity purification

Applications

Tested Applications:

WB, IHC, IF/ICC, IP, Indirect ELISA

Species Specificity:

human, mouse, rat

Background Information

Small G protein signaling modulator 3 (SGSM3) is also named as MAP, RABGAPL and RABGAPL. SGSM3 is highly correlated with Cx43 in heart functions and that high levels of SGSM3 may induce Cx43 turnover through lysosomal degradation in infarcted rat hearts (PMID: 29577900, PMID: 32271805). SGSM3 has been shown to be associated with small G-protein-coupled receptor signaling (PMID: 29693742). Several studies have shown that SGSM3 is associated with the risk of some cancers, including liver, breast, colorectal and bladder cancers (PMID: 32271805).

Storage

Storage:

Store at -80°C.

Storage Buffer:

PBS only, pH7.3

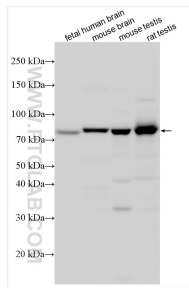
For technical support and original validation data for this product please contact:

T: 1 (888) 4PTGLAB (1-888-478-4522) (toll free in USA), or 1(312) 455-8498 (outside USA)

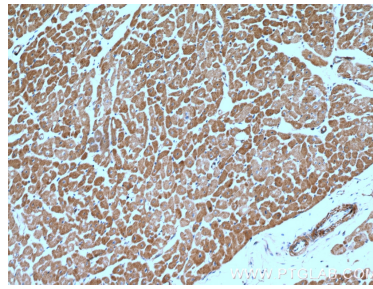
E: proteintech@ptglab.com
W: ptglab.com

This product is exclusively available under Proteintech Group brand and is not available to purchase from any other manufacturer.

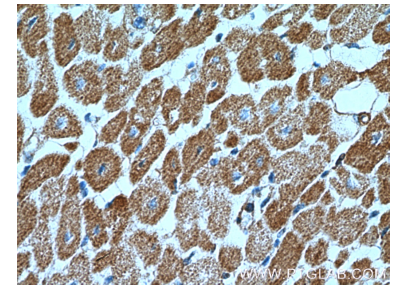
Selected Validation Data



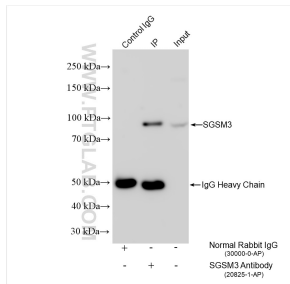
Various lysates were subjected to SDS PAGE followed by western blot with 20825-1-AP (SGSM3 antibody) at dilution of 1:3000 incubated at room temperature for 1.5 hours. This data was developed using the same antibody clone with 20825-1-PBS in a different storage buffer formulation.



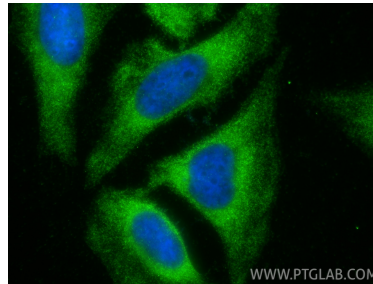
Immunohistochemical analysis of paraffin-embedded human heart tissue slide using 20825-1-AP (SGSM3 Antibody) at dilution of 1:200 (under 10x lens). This data was developed using the same antibody clone with 20825-1-PBS in a different storage buffer formulation.



Immunohistochemical analysis of paraffin-embedded human heart tissue slide using 20825-1-AP (SGSM3 Antibody) at dilution of 1:200 (under 40x lens). This data was developed using the same antibody clone with 20825-1-PBS in a different storage buffer formulation.



IP result of anti-SGSM3 (IP:20825-1-AP, 4ug; Detection:20825-1-AP 1:2000) with mouse brain tissue lysate 1720 ug. This data was developed using the same antibody clone with 20825-1-PBS in a different storage buffer formulation.



Immunofluorescent analysis of (-20°C Ethanol) fixed HeLa cells using SGSM3 antibody (20825-1-AP) at dilution of 1:200 and Coralite®488-Conjugated Goat Anti-Rabbit IgG(H+L) (SA00013-2). This data was developed using the same antibody clone with 20825-1-PBS in a different storage buffer formulation.