

For Research Use Only

GLIPR1L1 Polyclonal antibody

Catalog Number: 20828-1-AP



Basic Information

Catalog Number:

20828-1-AP

Size:

150ul , Concentration: 180 ug/ml by Nanodrop and 180 ug/ml by Bradford method using BSA as the standard;

Source:

Rabbit

Isotype:

IgG

Immunogen Catalog Number:

AG14852

GenBank Accession Number:

BC014603

GeneID (NCBI):

256710

UNIPROT ID:

Q6UWM5

Full Name:

GLI pathogenesis-related 1 like 1

Calculated MW:

242 aa, 27 kDa

Observed MW:

24 kDa

Purification Method:

Antigen affinity purification

Recommended Dilutions:

WB 1:500-1:1000

IHC 1:20-1:200

Applications

Tested Applications:

WB, IHC, ELISA

Species Specificity:

human, mouse, rat

Note-IHC: suggested antigen retrieval with TE buffer pH 9.0; (*) Alternatively, antigen retrieval may be performed with citrate buffer pH 6.0

Positive Controls:

WB : human testis tissue, mouse testis tissue, rat testis tissue

IHC : human testis tissue,

Storage

Storage:

Store at -20°C. Stable for one year after shipment.

Storage Buffer:

PBS with 0.02% sodium azide and 50% glycerol pH 7.3.

Aliquoting is unnecessary for -20°C storage

*** 20ul sizes contain 0.1% BSA

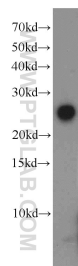
For technical support and original validation data for this product please contact:

T: 1 (888) 4PTGLAB (1-888-478-4522) (toll free in USA), or 1(312) 455-8498 (outside USA)

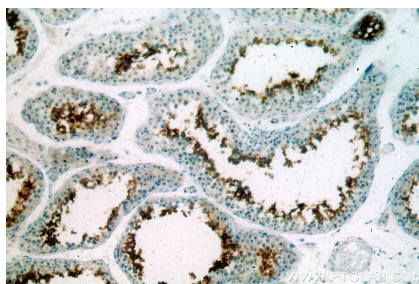
E: proteintech@ptglab.com
W: ptglab.com

This product is exclusively available under Proteintech Group brand and is not available to purchase from any other manufacturer.

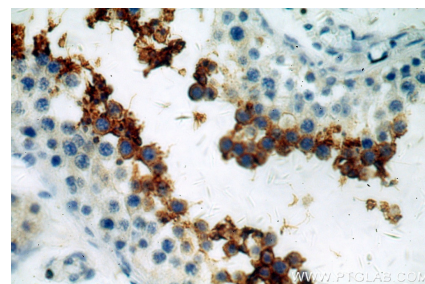
Selected Validation Data



human testis tissue were subjected to SDS PAGE followed by western blot with 20828-1-AP (GLIPR1L1 antibody) at dilution of 1:500 incubated at room temperature for 1.5 hours.



Immunohistochemical analysis of paraffin-embedded human testis using 20828-1-AP (GLIPR1L1 antibody) at dilution of 1:100 (under 10x lens).



Immunohistochemical analysis of paraffin-embedded human testis using 20828-1-AP (GLIPR1L1 antibody) at dilution of 1:100 (under 40x lens).