

For Research Use Only

SLC22A24 Polyclonal antibody

Catalog Number: 20834-1-AP



Basic Information

Catalog Number:

20834-1-AP

Size:

150ul, Concentration: 350 ug/ml by Nanodrop;

Source:

Rabbit

Isotype:

IgG

Immunogen Catalog Number:

AG14907

GenBank Accession Number:

BC034394

GeneID (NCBI):

283238

Full Name:

solute carrier family 22, member 24

Calculated MW:

322 aa, 36 kDa

Observed MW:

62 kDa

Purification Method:

Antigen affinity purification

Recommended Dilutions:

WB 1:500-1:1000

Applications

Tested Applications:

WB, ELISA

Species Specificity:

human, mouse, rat

Positive Controls:

WB : H9C2 cells, mouse brain tissue, mouse kidney tissue

Background Information

SLC22A24, an orphan transporter, belongs to the SLC22 family, which transports organic ions. SLC22A24 is conserved among higher order primates, but has diverged within lower level primates and other mammals.

Storage

Storage:

Store at -20°C. Stable for one year after shipment.

Storage Buffer:

PBS with 0.02% sodium azide and 50% glycerol pH 7.3.

Aliquoting is unnecessary for -20°C storage

*** 20ul sizes contain 0.1% BSA

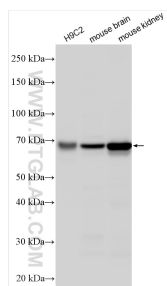
For technical support and original validation data for this product please contact:

T: 1 (888) 4PTGLAB (1-888-478-4522) (toll free in USA), or 1(312) 455-8498 (outside USA)

E: proteintech@ptglab.com
W: ptglab.com

This product is exclusively available under Proteintech Group brand and is not available to purchase from any other manufacturer.

Selected Validation Data



Various lysates were subjected to SDS PAGE followed by western blot with 20834-1-AP (SLC22A24 antibody) at dilution of 1:500 incubated at room temperature for 1.5 hours.