

For Research Use Only

SLC38A4 Polyclonal antibody

Catalog Number: 20857-1-AP

3 Publications



Basic Information

Catalog Number:

20857-1-AP

Size:

150ul, Concentration: 450 ug/ml by Nanodrop and 300 ug/ml by Bradford method using BSA as the standard;

Source:

Rabbit

Isotype:

IgG

Immunogen Catalog Number:

AG14827

GenBank Accession Number:

BC101827

GeneID (NCBI):

55089

UNIPROT ID:

Q969I6

Full Name:

solute carrier family 38, member 4

Calculated MW:

547 aa, 61 kDa

Observed MW:

61 kDa

Purification Method:

Antigen affinity purification

Recommended Dilutions:

WB 1:500-1:1000

IHC 1:20-1:200

Applications

Tested Applications:

WB, IHC, ELISA

Cited Applications:

WB, IF

Species Specificity:

human, mouse

Cited Species:

human, pig

Note-IHC: suggested antigen retrieval with TE buffer pH 9.0; (*) Alternatively, antigen retrieval may be performed with citrate buffer pH 6.0

Positive Controls:

WB : A549 cells, Jurkat cells, L02 cells

IHC : human kidney tissue, human liver cancer tissue, mouse liver tissue

Notable Publications

Author	Pubmed ID	Journal	Application
Qingge Jia	36257236	Pathol Res Pract	WB,IF
Lijie Zhou	34185414	Clin Transl Med	WB
Hosung Bae	38743489	J Clin Invest	WB,IF

Storage

Storage:

Store at -20°C. Stable for one year after shipment.

Storage Buffer:

PBS with 0.02% sodium azide and 50% glycerol pH 7.3.

Aliquoting is unnecessary for -20°C storage

*** 20ul sizes contain 0.1% BSA

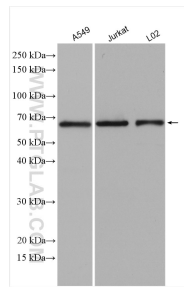
For technical support and original validation data for this product please contact:

T: 1 (888) 4PTGLAB (1-888-478-4522) (toll free in USA), or 1(312) 455-8498 (outside USA)

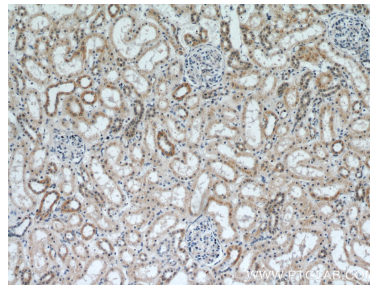
E: proteintech@ptglab.com
W: ptglab.com

This product is exclusively available under Proteintech Group brand and is not available to purchase from any other manufacturer.

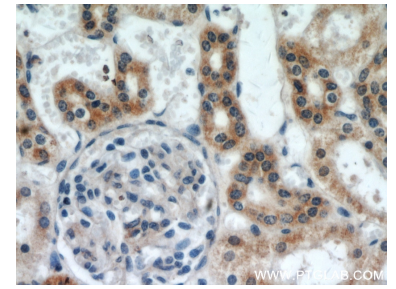
Selected Validation Data



Various lysates were subjected to SDS PAGE followed by western blot with 20857-1-AP (SLC38A4 antibody) at dilution of 1:600 incubated at room temperature for 1.5 hours.



Immunohistochemical analysis of paraffin-embedded human kidney using 20857-1-AP (SLC38A4 antibody) at dilution of 1:50 (under 10x lens).



Immunohistochemical analysis of paraffin-embedded human kidney using 20857-1-AP (SLC38A4 antibody) at dilution of 1:50 (under 40x lens).