

For Research Use Only

TFPI Polyclonal antibody

Catalog Number: 20865-1-AP **3 Publications**



Basic Information

Catalog Number: 20865-1-AP	GenBank Accession Number: BC015514	Purification Method: Antigen affinity purification
Size: 150ul, Concentration: 170 µg/ml by Nanodrop and 153 µg/ml by Bradford method using BSA as the standard;	GeneID (NCBI): 7035	Recommended Dilutions: WB 1:500-1:1000 IF 1:50-1:500
Source: Rabbit	Full Name: tissue factor pathway inhibitor (lipoprotein-associated coagulation inhibitor)	
Isotype: IgG	Calculated MW: 251aa, 29 kDa; 304aa, 35 kDa	
Immunogen Catalog Number: AG14913	Observed MW: 40-45 kDa	

Applications

Tested Applications: IF, WB, ELISA	Positive Controls: WB : HeLa cells, HepG2 cells IF : HepG2 cells,
Cited Applications: IHC, WB	
Species Specificity: human	
Cited Species: human	

Background Information

Tissue factor pathway inhibitor (TFPI) is a critical anticoagulant protein present in endothelium and platelets. TFPI is produced as two major isoforms in humans, TFPIa and TFPIb that result from alternative splicing. The TFPIb isoform localizes to the endothelium surface where it is a potent inhibitor of tissue factor-factor VIIa complexes that initiate blood coagulation. The TFPIa isoform is present in platelets. TFPI is a Kunitz-type serine protease inhibitor that exerts anticoagulant activity by blocking early procoagulant stimuli. TFPI can enhance anti-thrombotic treatment in sepsis, inflammatory diseases, and cardiovascular diseases.

Notable Publications

Author	Pubmed ID	Journal	Application
Chunyan Luo	32445923	Gene	WB
Kang An	29364003	Clin Appl Thromb Hemost	IHC
Xian Li	37660436	Thromb Res	WB

Storage

Storage:
Store at -20°C. Stable for one year after shipment.
Storage Buffer:
PBS with 0.02% sodium azide and 50% glycerol pH 7.3.
Aliquoting is unnecessary for -20°C storage

*** 20ul sizes contain 0.1% BSA

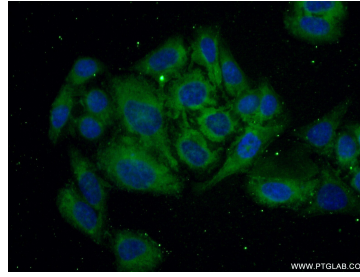
For technical support and original validation data for this product please contact:
T: 1 (888) 4PTGLAB (1-888-478-4522) (toll free in USA), or 1(312) 455-8498 (outside USA)
E: proteintech@ptglab.com
W: ptglab.com

This product is exclusively available under Proteintech Group brand and is not available to purchase from any other manufacturer.

Selected Validation Data



HeLa cells were subjected to SDS PAGE followed by western blot with 20865-1-AP (TFPI antibody) at dilution of 1:500 incubated at room temperature for 1.5 hours.



Immunofluorescent analysis of (-20°C Ethanol) fixed HepG2 cells using 20865-1-AP (TFPI antibody) at dilution of 1:50 and Alexa Fluor 488-conjugated AffiniPure Goat Anti-Rabbit IgG(H+L).