

For Research Use Only

C17orf37 Polyclonal antibody

Catalog Number: 20876-1-AP



Basic Information

Catalog Number: 20876-1-AP	GenBank Accession Number: BC006006	Purification Method: Antigen affinity purification
Size: 150ul , Concentration: 200 µg/ml by Nanodrop;	GeneID (NCBI): 84299	Recommended Dilutions: WB 1:500-1:1000
Source: Rabbit	Full Name: chromosome 17 open reading frame 37	
Isotype: IgG	Calculated MW: 115 aa, 12 kDa	
Immunogen Catalog Number: AG14975	Observed MW: 12 kDa	

Applications

Tested Applications: WB, ELISA	Positive Controls: WB : A549 cells, DU 145 cells, SK-BR-3 cells
Species Specificity: human, mouse	

Background Information

C17orf37 (chromosome 17 open reading frame 37), also known as C35/Rdx12/MGC14832, is located on human chromosome 17q12, 505 nucleotides from the 3' end of the ERBB2 oncogene. C17orf37 expression positively correlates with grade and stage of breast cancer, and increased expression has been shown in prostate cancer cells and tissues specimens (PMID: 17121940, 19503095). C17orf37 gene encodes a 12-kDa protein that does not have sequence similarity with any known protein. C17orf37 is expressed as a cytosolic protein with predominant membrane localization (PMID: 21628459).

Storage

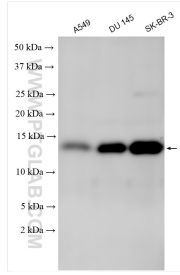
Storage:
Store at -20°C. Stable for one year after shipment.
Storage Buffer:
PBS with 0.02% sodium azide and 50% glycerol pH 7.3.
Aliquoting is unnecessary for -20°C storage

*** 20ul sizes contain 0.1% BSA

For technical support and original validation data for this product please contact:
T: 1 (888) 4PTGLAB (1-888-478-4522) (toll free in USA), or 1(312) 455-8498 (outside USA) E: proteintech@ptglab.com W: ptglab.com

This product is exclusively available under Proteintech Group brand and is not available to purchase from any other manufacturer.

Selected Validation Data



Various lysates were subjected to SDS PAGE followed by western blot with 20876-1-AP (C17orf37 antibody) at dilution of 1:500 incubated at room temperature for 1.5 hours.