

For Research Use Only

C7orf23 Polyclonal antibody

Catalog Number: 20880-1-AP



Basic Information

Catalog Number:

20880-1-AP

Size:

150ul, Concentration: 200 ug/ml by Nanodrop;

Source:

Rabbit

Isotype:

IgG

Immunogen Catalog Number:

AG14979

GenBank Accession Number:

BC002837

GeneID (NCBI):

79161

UNIPROT ID:

Q9BU79

Full Name:

chromosome 7 open reading frame 23

Calculated MW:

118 aa, 13 kDa

Observed MW:

16 kDa

Purification Method:

Antigen affinity purification

Recommended Dilutions:

IP 0.5-4.0 ug for 1.0-3.0 mg of total protein lysate

Applications

Tested Applications:

IP, ELISA

Species Specificity:

human

Positive Controls:

IP : Ramos cells,

Background Information

C7orf23, also known as TMEM243, encodes a membrane protein that may be associated with drug tolerance in cells. The C7orf23 gene is capable of generating at least 12 different splice variants, 10 of which are capable of encoding 7 different protein isoforms, some of which contain transmembrane structural domains. Recent studies have shown that C7orf23 is significantly up-regulated and highly sensitive in blood samples from PD patients, revealing its potential as a future biomarker for PD diagnosis.

Storage

Storage:

Store at -20°C. Stable for one year after shipment.

Storage Buffer:

PBS with 0.02% sodium azide and 50% glycerol pH 7.3.

Aliquoting is unnecessary for -20°C storage

*** 20ul sizes contain 0.1% BSA

For technical support and original validation data for this product please contact:

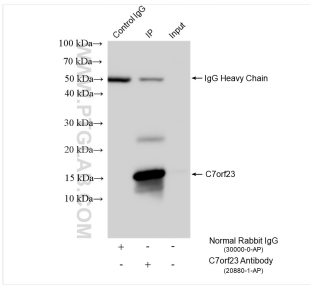
T: 1 (888) 4PTGLAB (1-888-478-4522) (toll free in USA), or 1(312) 455-8498 (outside USA)

E: proteintech@ptglab.com

W: ptglab.com

This product is exclusively available under Proteintech Group brand and is not available to purchase from any other manufacturer.

Selected Validation Data



IP result of anti-C7orf23 (IP:20880-1-AP, 4ug;
Detection:20880-1-AP 1:800) with Ramos cells
lysate 1680 ug.