

For Research Use Only

# TMEM243 Polyclonal antibody, PBS Only

Catalog Number: 20880-1-PBS



## Basic Information

<b>Catalog Number:</b> 20880-1-PBS	<b>GenBank Accession Number:</b> BC002837	<b>Purification Method:</b> Antigen affinity purification
<b>Size:</b> 100ug, Concentration: 1 mg/ml by Nanodrop;	<b>GeneID (NCBI):</b> 79161	
<b>Source:</b> Rabbit	<b>UNIPROT ID:</b> Q9BU79	
<b>Isotype:</b> IgG	<b>Full Name:</b> chromosome 7 open reading frame 23	
<b>Immunogen Catalog Number:</b> AG14979	<b>Calculated MW:</b> 118 aa, 13 kDa	
	<b>Observed MW:</b> 16 kDa	

## Applications

**Tested Applications:**  
IHC, IP, Indirect ELISA

**Species Specificity:**  
human

## Background Information

C7orf23, also known as TMEM243, encodes a membrane protein that may be associated with drug tolerance in cells. The C7orf23 gene is capable of generating at least 12 different splice variants, 10 of which are capable of encoding 7 different protein isoforms, some of which contain transmembrane structural domains. Recent studies have shown that C7orf23 is significantly up-regulated and highly sensitive in blood samples from PD patients, revealing its potential as a future biomarker for PD diagnosis.

## Storage

**Storage:**  
Store at -80°C.

**Storage Buffer:**  
PBS only, pH7.3

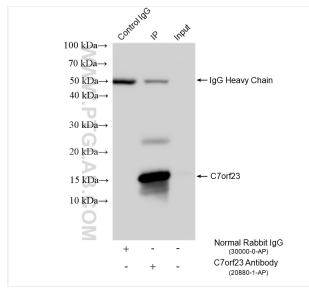
For technical support and original validation data for this product please contact:

T: 1 (888) 4PTGLAB (1-888-478-4522) (toll free in USA), or 1(312) 455-8498 (outside USA)

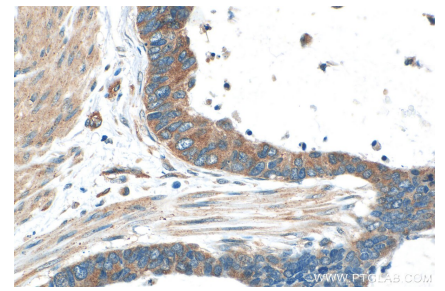
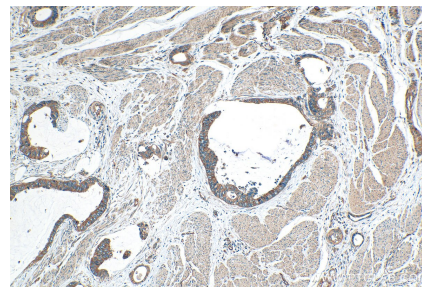
E: [proteintech@ptglab.com](mailto:proteintech@ptglab.com)  
W: [ptglab.com](http://ptglab.com)

**This product is exclusively available under Proteintech Group brand and is not available to purchase from any other manufacturer.**

## Selected Validation Data



IP result of anti-C7orf23 (IP:20880-1-AP, 4 $\mu$ g; Detection:20880-1-AP 1:800) with Ramos cells lysate 1680  $\mu$ g. This data was developed using the same antibody clone with 20880-1-PBS in a different storage buffer formulation.



Immunohistochemical analysis of paraffin-embedded human urothelial carcinoma tissue slide using 20880-1-AP (TMEM243 antibody) at dilution of 1:200 (under 10x lens). Heat mediated antigen retrieval with Tris-EDTA buffer (pH 9.0). This data was developed using the same antibody clone with 20880-1-PBS in a different storage buffer formulation.

Immunohistochemical analysis of paraffin-embedded human urothelial carcinoma tissue slide using 20880-1-AP (TMEM243 antibody) at dilution of 1:200 (under 40x lens). Heat mediated antigen retrieval with Tris-EDTA buffer (pH 9.0). This data was developed using the same antibody clone with 20880-1-PBS in a different storage buffer formulation.