

For Research Use Only

EPHB4 Polyclonal antibody, PBS Only

Catalog Number:20883-1-PBS

Featured Product



Basic Information

Catalog Number:

20883-1-PBS

Size:

100ug, Concentration: 1 mg/ml by Nanodrop;

Source:

Rabbit

Isotype:

IgG

Immunogen Catalog Number:

AG10033

GenBank Accession Number:

BC052804

GeneID (NCBI):

2050

UNIPROT ID:

P54760

Full Name:

EPH receptor B4

Calculated MW:

987 aa, 108 kDa

Observed MW:

110-120 kDa

Purification Method:

Antigen affinity purification

Applications

Tested Applications:

WB, IHC, IF/ICC, Indirect ELISA

Species Specificity:

human

Background Information

EPHB4 (Ephrin type-B receptor 4) is a member of the Eph receptor tyrosine kinase family, the largest group of receptor tyrosine kinases. It binds ephrin-B ligands to regulate embryonic vascular development, lymphangiogenesis, and adult angiogenesis. Aberrant EPHB4 signaling promotes tumor progression, metastasis, and therapy resistance in various cancers, including breast, prostate, and colorectal malignancies. As a key regulator of tumor vasculature and the tumor microenvironment, EPHB4 represents an emerging therapeutic target for anti-cancer drug development and a potential prognostic biomarker.

Storage

Storage:

Store at -80°C.

Storage Buffer:

PBS only, pH7.3

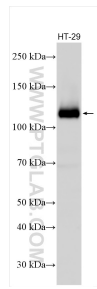
For technical support and original validation data for this product please contact:

T: 1 (888) 4PTGLAB (1-888-478-4522) (toll free in USA), or 1(312) 455-8498 (outside USA)

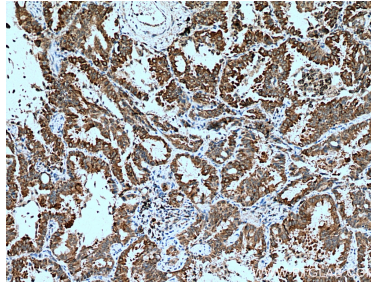
E: proteintech@ptglab.com
W: ptglab.com

This product is exclusively available under Proteintech Group brand and is not available to purchase from any other manufacturer.

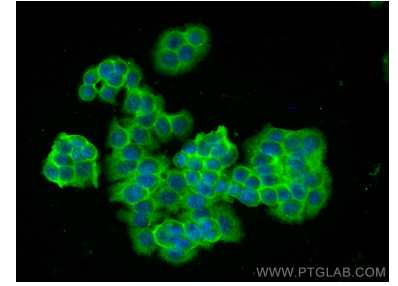
Selected Validation Data



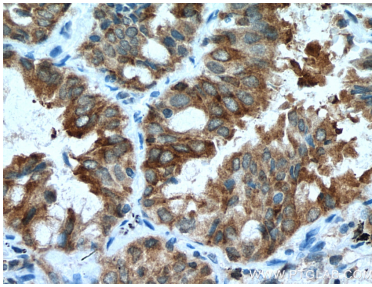
HT-29 cells were subjected to SDS PAGE followed by western blot with 20883-1-AP (EPHB4 antibody) at dilution of 1:3000 incubated at room temperature for 1.5 hours. This data was developed using the same antibody clone with 20883-1-PBS in a different storage buffer formulation.



Immunohistochemical analysis of paraffin-embedded human lung cancer tissue slide using 20883-1-AP (EPHB4 antibody) at dilution of 1:200 (under 10x lens). Heat mediated antigen retrieval with Tris-EDTA buffer (pH 9.0). This data was developed using the same antibody clone with 20883-1-PBS in a different storage buffer formulation.



Immunofluorescent analysis of (-20°C Ethanol) fixed HT-29 cells using EPHB4 antibody (20883-1-AP) at dilution of 1:400 and CoraLite@488-Conjugated AffiniPure Goat Anti-Rabbit IgG(H+L). This data was developed using the same antibody clone with 20883-1-PBS in a different storage buffer formulation.



Immunohistochemical analysis of paraffin-embedded human lung cancer tissue slide using 20883-1-AP (EPHB4 antibody) at dilution of 1:200 (under 40x lens). Heat mediated antigen retrieval with Tris-EDTA buffer (pH 9.0). This data was developed using the same antibody clone with 20883-1-PBS in a different storage buffer formulation.