

For Research Use Only

# AIFM2/ FSP1 Polyclonal antibody, PBS Only

Catalog Number: 20886-1-PBS

Featured Product



## Basic Information

**Catalog Number:**

20886-1-PBS

**Size:**

100ug, Concentration: 1 mg/ml by Nanodrop;

**Source:**

Rabbit

**Isotype:**

IgG

**Immunogen Catalog Number:**

AG13412

**GenBank Accession Number:**

BC023601

**GeneID (NCBI):**

84883

**UNIPROT ID:**

Q9BRQ8

**Full Name:**

apoptosis-inducing factor, mitochondrion-associated, 2

**Calculated MW:**

41 kDa

**Observed MW:**

41 kDa

**Purification Method:**

Antigen affinity purification

## Applications

**Tested Applications:**

WB, IHC, IF/ICC, IP, Indirect ELISA

**Species Specificity:**

human, mouse, rat

## Background Information

The human AIFM2 protein (also known as FSP1 or AMID) is an apoptosis-associated flavoprotein with a 6-hydroxy FAD cofactor. AIFM2 is a NAD(P)H-binding oxidoreductase with some sequence similarities to A1FM1 (formerly known as AIF, Apoptosis-Inducing Factor), a mitochondrion-associated enzyme that relocates to the cell nucleus during apoptosis and is considered to be a key player in the progression of cell death.

## Storage

**Storage:**

Store at -80°C.

**Storage Buffer:**

PBS only, pH7.3

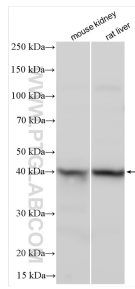
For technical support and original validation data for this product please contact:

T: 1 (888) 4PTGLAB (1-888-478-4522) (toll free in USA), or 1(312) 455-8498 (outside USA)

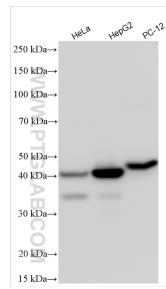
E: [proteintech@ptglab.com](mailto:proteintech@ptglab.com)  
W: [ptglab.com](http://ptglab.com)

This product is exclusively available under Proteintech Group brand and is not available to purchase from any other manufacturer.

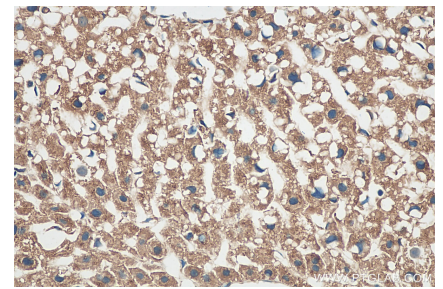
## Selected Validation Data



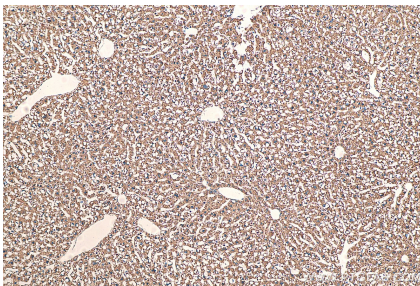
Various lysates were subjected to SDS PAGE followed by western blot with 20886-1-AP (AIFM2/ FSP1 antibody) at dilution of 1:4000 incubated at room temperature for 1.5 hours. This data was developed using the same antibody clone with 20886-1-PBS in a different storage buffer formulation.



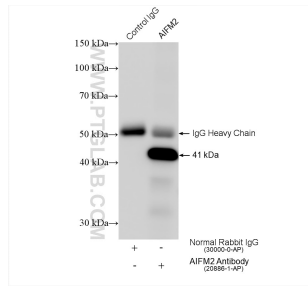
Various lysates were subjected to SDS PAGE followed by western blot with 20886-1-AP (AIFM2/ FSP1 antibody) at dilution of 1:3000 incubated at room temperature for 1.5 hours. This data was developed using the same antibody clone with 20886-1-PBS in a different storage buffer formulation.



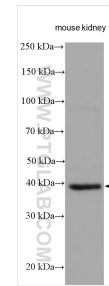
Immunohistochemical analysis of paraffin-embedded mouse liver tissue slide using 20886-1-AP (AIFM2/ FSP1 antibody) at dilution of 1:200 (under 40x lens). Heat mediated antigen retrieval with Tris-EDTA buffer (pH 9.0). This data was developed using the same antibody clone with 20886-1-PBS in a different storage buffer formulation.



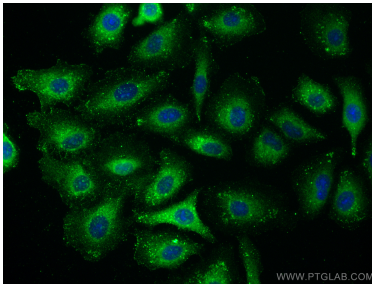
Immunohistochemical analysis of paraffin-embedded mouse liver tissue slide using 20886-1-AP (AIFM2/ FSP1 antibody) at dilution of 1:200 (under 10x lens). Heat mediated antigen retrieval with Tris-EDTA buffer (pH 9.0). This data was developed using the same antibody clone with 20886-1-PBS in a different storage buffer formulation.



IP result of anti-AIFM2/ FSP1 (IP:20886-1-AP, 4ug; Detection:20886-1-AP 1:3000) with LO2 cells lysate 1040 ug. This data was developed using the same antibody clone with 20886-1-PBS in a different storage buffer formulation.



mouse kidney tissue were subjected to SDS PAGE followed by western blot with 20886-1-AP (AIFM2/ FSP1 antibody) at dilution of 1:1500 incubated at room temperature for 1.5 hours. This data was developed using the same antibody clone with 20886-1-PBS in a different storage buffer formulation.



Immunofluorescent analysis of (-20°C Methanol) fixed A549 cells using AIFM2/ FSP1 antibody (20886-1-AP) at dilution of 1:200 and Multi-rAb CoraLite® Plus 488-Goat Anti-Rabbit Recombinant Secondary Antibody (H+L) (RGAR002). This data was developed using the same antibody clone with 20886-1-PBS in a different storage buffer formulation.