

For Research Use Only

Caldesmon Polyclonal antibody

Catalog Number: 20887-1-AP

Featured Product

7 Publications



Basic Information

Catalog Number: 20887-1-AP	GenBank Accession Number: BC040354	Purification Method: Antigen affinity purification
Size: 150ul, Concentration: 550 µg/ml by Nanodrop and 333 µg/ml by Bradford method using BSA as the standard;	GeneID (NCBI): 800	Recommended Dilutions: WB 1:5000-1:50000 IHC 1:1000-1:4000 IF 1:50-1:500
Source: Rabbit	Full Name: caldesmon 1	
Isotype: IgG	Calculated MW: 538 aa, 63 kDa	
Immunogen Catalog Number: AG13676	Observed MW: 70-80 kDa	

Applications

Tested Applications:
FC, IF, IHC, WB, ELISA

Cited Applications:
IF, IHC, WB

Species Specificity:
human, mouse

Cited Species:
human, mouse

Note-IHC: suggested antigen retrieval with TE buffer pH 9.0; (*) Alternatively, antigen retrieval may be performed with citrate buffer pH 6.0

Positive Controls:

WB: A2780 cells, HeLa cells, HT-1080 cells, MDA-MB-231 cells, PC-3 cells, SKOV-3 cells

IHC: human colon tissue, mouse heart tissue

IF: mouse heart tissue, HeLa cells

Background Information

Caldesmon (CALD1), a protein found in the cytoskeleton, plays an important role in proliferation, apoptosis, cell motility, adhesion, receptor function, and second messenger pathways. Caldesmon is a substrate of cdc2 kinase and Erk1/2 MAPK, and phosphorylation by either of these kinases reverses the inhibitory effects of caldesmon. Caldesmon (CALD1) is a prognostic biomarker and correlated with bladder cancer (PMID: 34733993) and immune infiltrates in gastric cancers (PMID: 34189308).

Notable Publications

Author	Pubmed ID	Journal	Application
Jiakang Zhang	36230524	Cancers (Basel)	WB
Dongli Liang	28252009	Sci Rep	WB
Iddrisu B Yabasin	30108509	Front Physiol	WB,IF

Storage

Storage:

Store at -20°C. Stable for one year after shipment.

Storage Buffer:

PBS with 0.02% sodium azide and 50% glycerol pH 7.3.

Aliquoting is unnecessary for -20°C storage

*** 20ul sizes contain 0.1% BSA

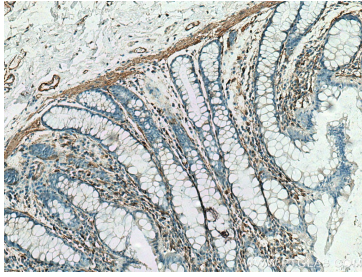
For technical support and original validation data for this product please contact:

T: 1 (888) 4PTGLAB (1-888-478-4522) (toll free in USA), or 1(312) 455-8498 (outside USA)

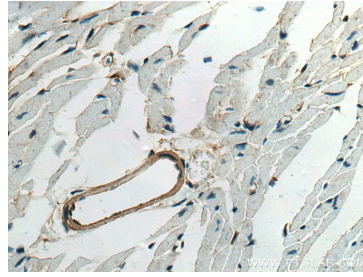
E: proteintech@ptglab.com
W: ptglab.com

This product is exclusively available under Proteintech Group brand and is not available to purchase from any other manufacturer.

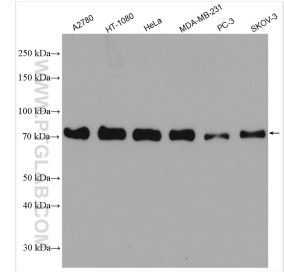
Selected Validation Data



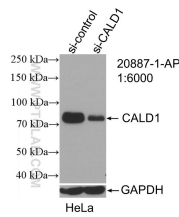
Immunohistochemical analysis of paraffin-embedded human colon tissue slide using 20887-1-AP (Caldesmon antibody) at dilution of 1:2000 (under 10x lens). Heat mediated antigen retrieval with Tris-EDTA buffer (pH 9.0).



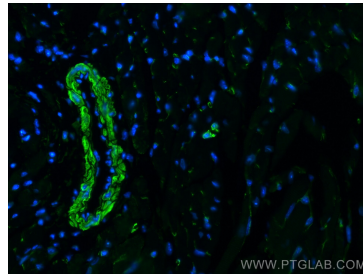
Immunohistochemical analysis of paraffin-embedded mouse heart tissue slide using 20887-1-AP (Caldesmon antibody) at dilution of 1:2000 (under 40x lens). Heat mediated antigen retrieval with Tris-EDTA buffer (pH 9.0).



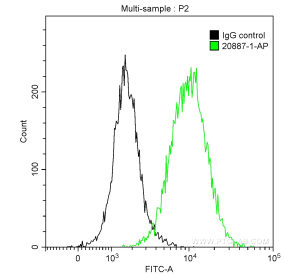
Various lysates were subjected to SDS PAGE followed by western blot with 20887-1-AP (Caldesmon antibody) at dilution of 1:10000 incubated at room temperature for 1.5 hours.



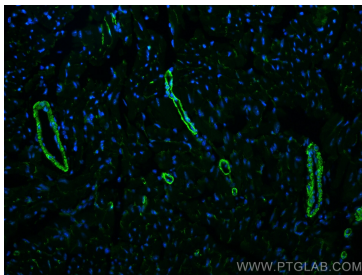
WB result of Caldesmon antibody (20887-1-AP; 1:6000; incubated at room temperature for 1.5 hours) with sh-Control and sh-Caldesmon transfected HeLa cells.



Immunofluorescent analysis of (4% PFA) fixed mouse heart tissue using Caldesmon antibody (20887-1-AP) at dilution of 1:200 and CoraLite@488-Conjugated AffiniPure Goat Anti-Rabbit IgG(H+L).



1×10^6 HeLa cells were intracellularly stained with 0.2 ug Anti-Human Caldesmon (20887-1-AP) and CoraLite@488-Conjugated AffiniPure Goat Anti-Rabbit IgG(H+L) at dilution 1:1000 (green), and 0.2 ug Control Antibody. Cells were fixed with 90% MeOH.



Immunofluorescent analysis of (4% PFA) fixed mouse heart tissue using Caldesmon antibody (20887-1-AP) at dilution of 1:200 and CoraLite@488-Conjugated AffiniPure Goat Anti-Rabbit IgG(H+L).