

For Research Use Only

# SLC16A4 Polyclonal antibody

Catalog Number: 20889-1-AP

2 Publications



## Basic Information

### Catalog Number:

20889-1-AP

### Size:

150ul, Concentration: 280 ug/ml by Bradford method using BSA as the standard;

### Source:

Rabbit

### Isotype:

IgG

### Immunogen Catalog Number:

AG14190

### GenBank Accession Number:

BC021664

### GeneID (NCBI):

9122

### UNIPROT ID:

O15374

### Full Name:

solute carrier family 16, member 4 (monocarboxylic acid transporter 5)

### Calculated MW:

487 aa, 54 kDa

### Observed MW:

50 kDa

### Purification Method:

Antigen affinity purification

### Recommended Dilutions:

WB 1:500-1:3000

IHC 1:50-1:500

## Applications

### Tested Applications:

WB, IHC, ELISA

### Cited Applications:

WB

### Species Specificity:

human

### Cited Species:

human, mouse

### Positive Controls:

WB: Jurkat cells,

IHC: human stomach cancer tissue,

**Note-IHC: suggested antigen retrieval with TE buffer pH 9.0; (\*) Alternatively, antigen retrieval may be performed with citrate buffer pH 6.0**

## Background Information

SLC16A4, also named as MCT5, is a proton-linked monocarboxylate transporter which can catalyze the rapid transport across the plasma membrane of many monocarboxylates. It has been reported that SLC16A4 is expressed in human intestine, liver and kidney. (PMID:18996437)

## Notable Publications

Author	Pubmed ID	Journal	Application
Bin Zhang	32987196	Int J Biochem Cell Biol	WB
Xiaoliang Han	37098982	Arq Bras Cardiol	WB

## Storage

### Storage:

Store at -20°C. Stable for one year after shipment.

### Storage Buffer:

PBS with 0.02% sodium azide and 50% glycerol pH 7.3.

Aliquoting is unnecessary for -20°C storage

\*\*\* 20ul sizes contain 0.1% BSA

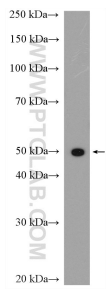
For technical support and original validation data for this product please contact:

T: 1 (888) 4PTGLAB (1-888-478-4522) (toll free in USA), or 1(312) 455-8498 (outside USA)

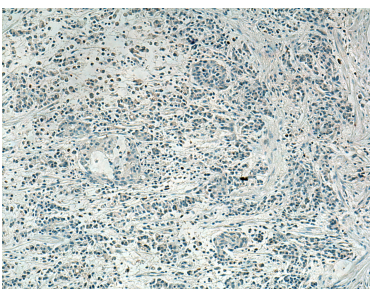
E: [proteintech@ptglab.com](mailto:proteintech@ptglab.com)  
W: [ptglab.com](http://ptglab.com)

This product is exclusively available under Proteintech Group brand and is not available to purchase from any other manufacturer.

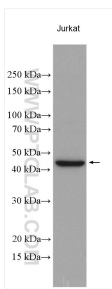
Selected Validation Data



Jurkat cells were subjected to SDS PAGE followed by western blot with 20889-1-AP (SLC16A4 antibody) at dilution of 1:300 incubated at room temperature for 1.5 hours.



Immunohistochemical analysis of paraffin-embedded human stomach cancer tissue slide using 20889-1-AP (SLC16A4 antibody) at dilution of 1:200 (under 10x lens). Heat mediated antigen retrieval with Tris-EDTA buffer (pH 9.0).



Various lysates were subjected to SDS PAGE followed by western blot with 20889-1-AP (SLC16A4 antibody) at dilution of 1:1500 incubated at room temperature for 1.5 hours.