

For Research Use Only

# SEC23IP Polyclonal antibody, PBS Only

Catalog Number:20892-1-PBS



## Basic Information

**Catalog Number:**

20892-1-PBS

**Size:**

100ug, Concentration: 1 mg/ml by Nanodrop;

**Source:**

Rabbit

**Isotype:**

IgG

**Immunogen Catalog Number:**

AG14916

**GenBank Accession Number:**

BC063800

**GeneID (NCBI):**

11196

**UNIPROT ID:**

Q9Y6Y8

**Full Name:**

SEC23 interacting protein

**Calculated MW:**

1000 aa, 111 kDa

**Observed MW:**

125 kDa

**Purification Method:**

Antigen affinity purification

## Applications

**Tested Applications:**

WB, IHC, IF/ICC, IP, Indirect ELISA

**Species Specificity:**

human, mouse, rat

## Background Information

SEC23-interacting protein (SEC23IP), also known as p125, is a member of the phosphatidic acid preferring-phospholipase A1 family. SEC23IP interacts with Sec23, a coat component of COPII vesicles which are involved in protein export from the endoplasmic reticulum (ER). SEC23IP localizes to ER exit sites and participates in the organization of this compartment (PMID: 15623529). It may have a role in the early stage of the secretory pathway (PMID: 10400679).

## Storage

**Storage:**

Store at -80°C.

**Storage Buffer:**

PBS only, pH7.3

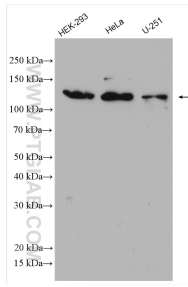
For technical support and original validation data for this product please contact:

T: 1 (888) 4PTGLAB (1-888-478-4522) (toll free in USA), or 1(312) 455-8498 (outside USA)

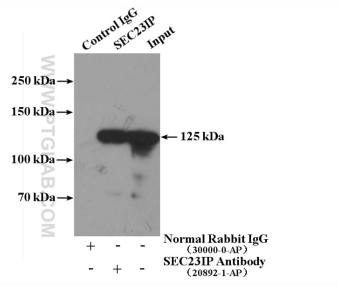
E: [proteintech@ptglab.com](mailto:proteintech@ptglab.com)  
W: [ptglab.com](http://ptglab.com)

**This product is exclusively available under Proteintech Group brand and is not available to purchase from any other manufacturer.**

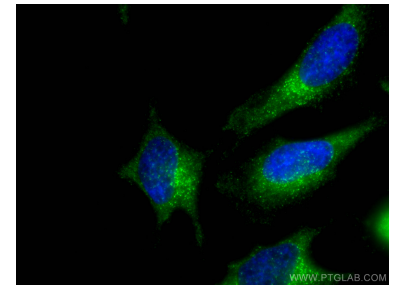
## Selected Validation Data



Various lysates were subjected to SDS PAGE followed by western blot with 20892-1-AP (SEC23IP antibody) at dilution of 1:2000 incubated at room temperature for 1.5 hours. This data was developed using the same antibody clone with 20892-1-PBS in a different storage buffer formulation.



IP result of anti-SEC23IP (IP:20892-1-AP, 4ug; Detection:20892-1-AP 1:1000) with HeLa cells lysate 3600ug. This data was developed using the same antibody clone with 20892-1-PBS in a different storage buffer formulation.



Immunofluorescent analysis of (-20°C Ethanol) fixed HeLa cells using SEC23IP antibody (20892-1-AP) at dilution of 1:0 and CoraLite@488-Conjugated AffiniPure Goat Anti-Rabbit IgG(H+L). This data was developed using the same antibody clone with 20892-1-PBS in a different storage buffer formulation.



Immunohistochemical analysis of paraffin-embedded mouse brain tissue slide using 20892-1-AP (SEC23IP antibody) at dilution of 1:400 (under 40x lens). Heat mediated antigen retrieval with Tris-EDTA buffer (pH 9.0). This data was developed using the same antibody clone with 20892-1-PBS in a different storage buffer formulation.



Immunohistochemical analysis of paraffin-embedded mouse brain tissue slide using 20892-1-AP (SEC23IP antibody) at dilution of 1:400 (under 10x lens). Heat mediated antigen retrieval with Tris-EDTA buffer (pH 9.0). This data was developed using the same antibody clone with 20892-1-PBS in a different storage buffer formulation.