

For Research Use Only

FBXL15 Polyclonal antibody

Catalog Number: 20895-1-AP



Basic Information

Catalog Number: 20895-1-AP	GenBank Accession Number: BC002912	Purification Method: Antigen affinity purification
Size: 150ul, Concentration: 260 µg/ml by Nanodrop and 260 µg/ml by Bradford method using BSA as the standard;	GeneID (NCBI): 79176	Recommended Dilutions: WB 1:200-1:1000 IHC 1:50-1:500
Source: Rabbit	Full Name: F-box and leucine-rich repeat protein 15	
Isotype: IgG	Calculated MW: 300 aa, 33 kDa	
Immunogen Catalog Number: AG14949	Observed MW: 33 kDa	

Applications

Tested Applications: IHC, WB, ELISA	Positive Controls: WB: MDA-MB-453s cells, IHC: human breast cancer tissue,
Species Specificity: human	
Note-IHC: suggested antigen retrieval with TE buffer pH 9.0; (*) Alternatively, antigen retrieval may be performed with citrate buffer pH 6.0	

Background Information

Storage

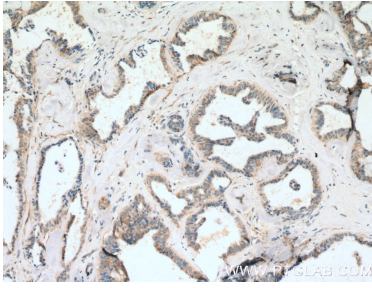
Storage:
Store at -20°C. Stable for one year after shipment.
Storage Buffer:
PBS with 0.02% sodium azide and 50% glycerol pH 7.3.
Aliquoting is unnecessary for -20°C storage

*** 20ul sizes contain 0.1% BSA

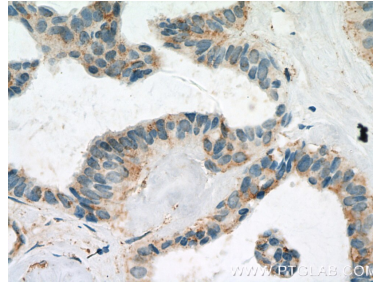
For technical support and original validation data for this product please contact:
T: 1 (888) 4PTGLAB (1-888-478-4522) (toll free in USA), or 1(312) 455-8498 (outside USA)
E: proteintech@ptglab.com
W: ptglab.com

This product is exclusively available under Proteintech Group brand and is not available to purchase from any other manufacturer.

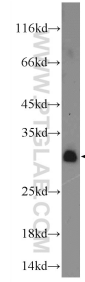
Selected Validation Data



Immunohistochemical analysis of paraffin-embedded human breast cancer tissue slide using 20895-1-AP (FBXL15 Antibody) at dilution of 1:200 (under 10x lens). Heat mediated antigen retrieval with Tris-EDTA buffer (pH 9.0).



Immunohistochemical analysis of paraffin-embedded human breast cancer tissue slide using 20895-1-AP (FBXL15 Antibody) at dilution of 1:200 (under 40x lens). Heat mediated antigen retrieval with Tris-EDTA buffer (pH 9.0).



MDA-MB-453s cells were subjected to SDS PAGE followed by western blot with 20895-1-AP (FBXL15 Antibody) at dilution of 1:300 incubated at 4 degree celsius over night.