

For Research Use Only

BRAF Polyclonal antibody

Catalog Number:20899-1-AP **17 Publications**



Basic Information

Catalog Number: 20899-1-AP	GenBank Accession Number: BC101757	Purification Method: Antigen affinity purification
Size: 150ul , Concentration: 450 ug/ml by Nanodrop;	GeneID (NCBI): 673	Recommended Dilutions: WB 1:1000-1:4000 IHC 1:100-1:400 IF/ICC 1:50-1:500
Source: Rabbit	UNIPROT ID: P15056	
Isotype: IgG	Full Name: v-raf murine sarcoma viral oncogene homolog B1	
Immunogen Catalog Number: AG15014	Calculated MW: 766 aa, 84 kDa	
	Observed MW: 65-70 kDa	

Applications

Tested Applications:
WB, IHC, IF/ICC, ELISA

Cited Applications:
WB, IHC, IF

Species Specificity:
human, mouse

Cited Species:
human, mouse, chicken

Note-IHC: suggested antigen retrieval with TE buffer pH 9.0; (*) Alternatively, antigen retrieval may be performed with citrate buffer pH 6.0

Positive Controls:

WB : HT-29 cells, HEK-293 cells, HeLa cells, K-562 cells, Jurkat cells, NIH/3T3 cells

IHC : human malignant melanoma tissue, human testis tissue, human thyroid cancer tissue

IF/ICC : NIH/3T3 cells, HeLa cells

Background Information

B-Raf proto-oncogene serine/threonine kinase(BRAF), is a protein belonging to the raf/mil family of serine/threonine protein kinases. BRAF plays a role in regulating the MAP kinase/ERKs signaling pathway, which affects cell division, differentiation, and secretion. BRAF is associated with cardiofaciocutaneous syndrome, a disease characterized by heart defects, mental retardation and a distinctive facial appearance. BRAF is also associated with various cancers, including non-Hodgkin lymphoma, colorectal cancer, malignant melanoma, thyroid carcinoma, non-small cell lung carcinoma, and adenocarcinoma of lung. BRAF plays a role in the PD-1/PDL-1 pathway. In some cancers, BRAF is activated by rearrangements that fuse its kinase domain to 5' partner genes and then has different molecular weights (PMID: 23890088). BRAF has several isoforms, the calculated molecular weight of BRAF is 84 kDa, but the observed molecular weight is about 65 kDa(isoform).

Notable Publications

Author	Pubmed ID	Journal	Application
Xiaoyan Wang	32900481	Biochem Biophys Res Commun	WB
Serdar Karakurt	33110363	Turk J Biol	WB
Zhaoyu Yang	32463597	Thorac Cancer	WB

Storage

Storage:

Store at -20°C. Stable for one year after shipment.

Storage Buffer:

PBS with 0.02% sodium azide and 50% glycerol pH 7.3.

Aliquoting is unnecessary for -20°C storage

***** 20ul sizes contain 0.1% BSA**

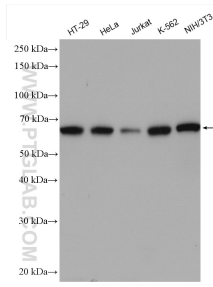
For technical support and original validation data for this product please contact:

T: 1 (888) 4PTGLAB (1-888-478-4522) (toll free in USA), or 1(312) 455-8498 (outside USA)

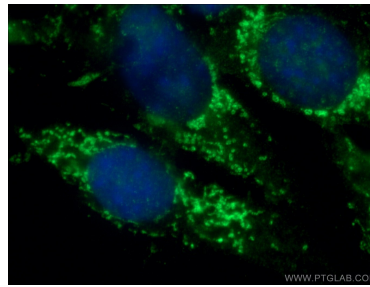
E: proteintech@ptglab.com
W: ptglab.com

This product is exclusively available under Proteintech Group brand and is not available to purchase from any other manufacturer.

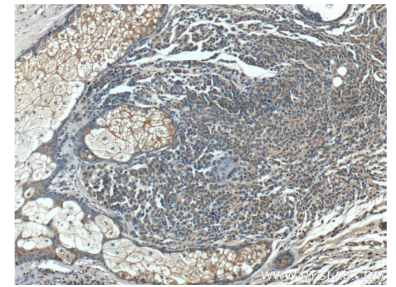
Selected Validation Data



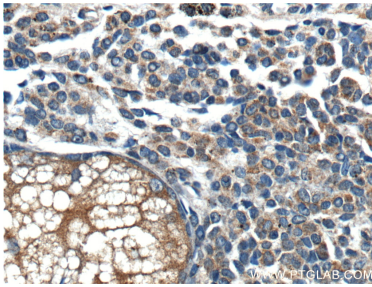
Various lysates were subjected to SDS PAGE followed by western blot with 20899-1-AP (BRAF antibody) at dilution of 1:2000 incubated at room temperature for 1.5 hours.



Immunofluorescent analysis of (-20°C Ethanol) fixed NIH/3T3 cells using 20899-1-AP (BRAF antibody) at dilution of 1:50 and Alexa Fluor 488-conjugated Goat Anti-Rabbit IgG(H+L).



Immunohistochemical analysis of paraffin-embedded human malignant melanoma tissue slide using 20899-1-AP (BRAF Antibody) at dilution of 1:200 (under 10x lens).



Immunohistochemical analysis of paraffin-embedded human malignant melanoma tissue slide using 20899-1-AP (BRAF Antibody) at dilution of 1:200 (under 40x lens).