

For Research Use Only

# C3orf20 Polyclonal antibody, PBS Only

Catalog Number: 20906-1-PBS



## Basic Information

**Catalog Number:**

20906-1-PBS

**Size:**

100ug, Concentration: 1 mg/ml by Nanodrop;

**Source:**

Rabbit

**Isotype:**

IgG

**Immunogen Catalog Number:**

AG15031

**GenBank Accession Number:**

BC038406

**GeneID (NCBI):**

84077

**UNIPROT ID:**

Q8ND61

**Full Name:**

chromosome 3 open reading frame 20

**Calculated MW:**

904 aa, 101 kDa

**Observed MW:**

101 kDa, 88 kDa

**Purification Method:**

Antigen affinity purification

## Applications

**Tested Applications:**

WB, IHC, IP, Indirect ELISA

**Species Specificity:**

human, mouse

## Background Information

The function of C3orf20 has not been widely studied, and is yet to be fully elucidated. Two isoforms were produced by alternative splicing with predicted MW of 88 and 101 kDa according to UniProt. Catalog# 20906-1-AP can recognize both 88 and 101 kDa isoforms.

## Storage

**Storage:**

Store at -80°C.

**Storage Buffer:**

PBS Only

For technical support and original validation data for this product please contact:

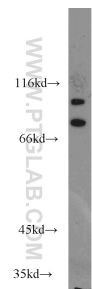
T: 1 (888) 4PTGLAB (1-888-478-4522) (toll free in USA), or 1(312) 455-8498 (outside USA)

E: [proteintech@ptglab.com](mailto:proteintech@ptglab.com)

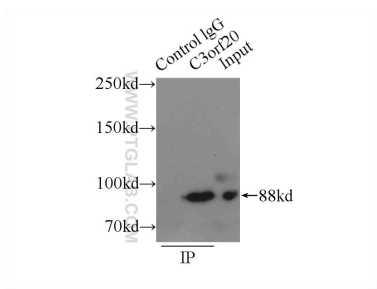
W: [ptglab.com](http://ptglab.com)

This product is exclusively available under Proteintech Group brand and is not available to purchase from any other manufacturer.

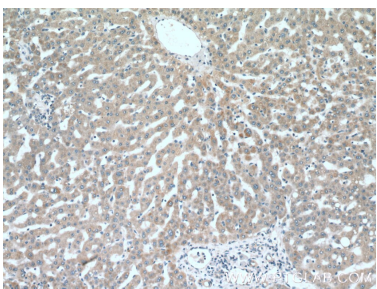
Selected Validation Data



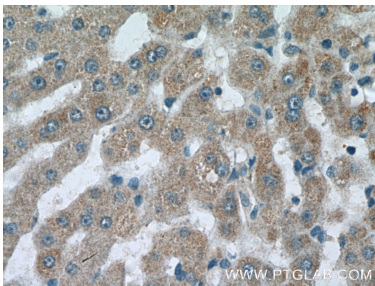
human brain tissue were subjected to SDS PAGE followed by western blot with 20906-1-AP (C3orf20 antibody) at dilution of 1:500 incubated at room temperature for 1.5 hours. This data was developed using the same antibody clone with 20906-1-PBS in a different storage buffer formulation.



IP result of anti-C3orf20 (IP:20906-1-AP, 3ug; Detection:20906-1-AP 1:500) with mouse brain tissue lysate 10000ug. This data was developed using the same antibody clone with 20906-1-PBS in a different storage buffer formulation.



Immunohistochemical analysis of paraffin-embedded human liver tissue slide using 20906-1-AP (C3orf20 Antibody) at dilution of 1:200 (under 10x lens). This data was developed using the same antibody clone with 20906-1-PBS in a different storage buffer formulation.



Immunohistochemical analysis of paraffin-embedded human liver tissue slide using 20906-1-AP (C3orf20 Antibody) at dilution of 1:200 (under 40x lens). This data was developed using the same antibody clone with 20906-1-PBS in a different storage buffer formulation.