

For Research Use Only

FAM185A Polyclonal antibody

Catalog Number: 20911-1-AP



Basic Information

Catalog Number:

20911-1-AP

Size:

150ul , Concentration: 260 ug/ml by Nanodrop and 253 ug/ml by Bradford method using BSA as the standard;

Source:

Rabbit

Isotype:

IgG

Immunogen Catalog Number:

AG15041

GenBank Accession Number:

BC029175

GeneID (NCBI):

222234

UNIPROT ID:

Q8NOU4

Full Name:

family with sequence similarity 185, member A

Calculated MW:

393 aa, 42 kDa

Observed MW:

30 kDa, 42 kDa

Purification Method:

Antigen affinity purification

Recommended Dilutions:

WB 1:500-1:2000

IHC 1:20-1:200

Applications

Tested Applications:

WB, IHC, ELISA

Species Specificity:

human

Note-IHC: suggested antigen retrieval with **TE buffer pH 9.0; (*) Alternatively, antigen retrieval may be performed with citrate buffer pH 6.0**

Positive Controls:

WB : HeLa cells, HEK-293 cells, MCF-7 cells

IHC : human hepatocirrhosis tissue, human spleen tissue

Storage

Storage:

Store at -20°C. Stable for one year after shipment.

Storage Buffer:

PBS with 0.02% sodium azide and 50% glycerol pH 7.3.

Aliquoting is unnecessary for -20°C storage

*** 20ul sizes contain 0.1% BSA

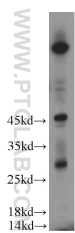
For technical support and original validation data for this product please contact:

T: 1 (888) 4PTGLAB (1-888-478-4522) (toll free in USA), or 1(312) 455-8498 (outside USA)

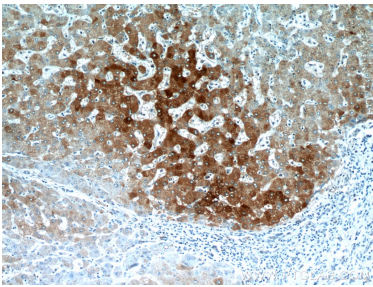
E: proteintech@ptglab.com
W: ptglab.com

This product is exclusively available under Proteintech Group brand and is not available to purchase from any other manufacturer.

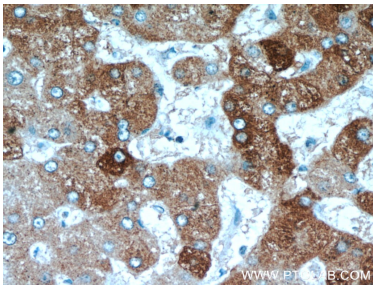
Selected Validation Data



HeLa cells were subjected to SDS PAGE followed by western blot with 20911-1-AP (FAM185A antibody) at dilution of 1:500 incubated at room temperature for 1.5 hours.



Immunohistochemical analysis of paraffin-embedded human hepatocirrhosis using 20911-1-AP (FAM185A antibody) at dilution of 1:50 (under 10x lens).



Immunohistochemical analysis of paraffin-embedded human hepatocirrhosis using 20911-1-AP (FAM185A antibody) at dilution of 1:50 (under 40x lens).