

For Research Use Only

C3orf21 Polyclonal antibody, PBS Only

Catalog Number: 20913-1-PBS



Basic Information

Catalog Number:

20913-1-PBS

Size:

100ug, Concentration: 1 mg/ml by Nanodrop;

Source:

Rabbit

Isotype:

IgG

Immunogen Catalog Number:

AG15043

GenBank Accession Number:

BC039067

GeneID (NCBI):

152002

UNIPROT ID:

Q8NBI6

Full Name:

chromosome 3 open reading frame 21

Calculated MW:

393 aa, 44 kDa

Observed MW:

44 kDa

Purification Method:

Antigen affinity purification

Applications

Tested Applications:

WB, IHC, IF/ICC, Indirect ELISA

Species Specificity:

human, mouse, rat

Storage

Storage:

Store at -80°C.

Storage Buffer:

PBS only, pH7.3

For technical support and original validation data for this product please contact:

T: 1 (888) 4PTGLAB (1-888-478-4522) (toll free in USA), or 1(312) 455-8498 (outside USA)

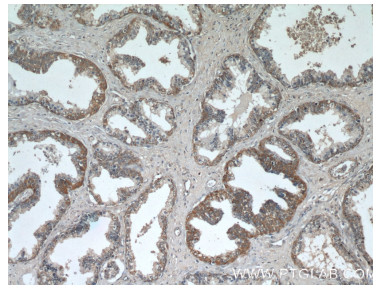
E: proteintech@ptglab.com
W: ptglab.com

This product is exclusively available under Proteintech Group brand and is not available to purchase from any other manufacturer.

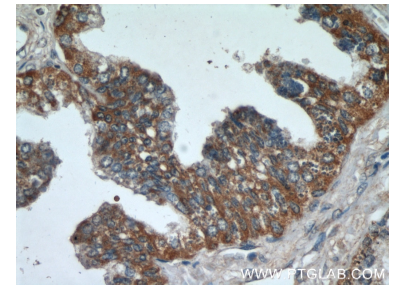
Selected Validation Data



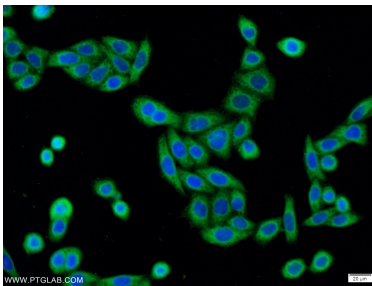
HeLa cells were subjected to SDS PAGE followed by western blot with 20913-1-AP (C3orf21 antibody) at dilution of 1:800 incubated at room temperature for 1.5 hours. This data was developed using the same antibody clone with 20913-1-PBS in a different storage buffer formulation.



Immunohistochemical analysis of paraffin-embedded human prostate hyperplasia using 20913-1-AP (C3orf21 antibody) at dilution of 1:50 (under 10x lens). This data was developed using the same antibody clone with 20913-1-PBS in a different storage buffer formulation.



Immunohistochemical analysis of paraffin-embedded human prostate hyperplasia using 20913-1-AP (C3orf21 antibody) at dilution of 1:50 (under 40x lens). This data was developed using the same antibody clone with 20913-1-PBS in a different storage buffer formulation.



Immunofluorescent analysis of HeLa cells using 20913-1-AP (C3orf21 antibody) at dilution of 1:50 and Alexa Fluor 488-conjugated AffiniPure Goat Anti-Rabbit IgG(H+L). This data was developed using the same antibody clone with 20913-1-PBS in a different storage buffer formulation.