

For Research Use Only

# WDR37 Polyclonal antibody

Catalog Number: 20916-1-AP

2 Publications



## Basic Information

### Catalog Number:

20916-1-AP

### Size:

150ul, Concentration: 240 ug/ml by Nanodrop and 207 ug/ml by Bradford method using BSA as the standard;

### Source:

Rabbit

### Isotype:

IgG

### Immunogen Catalog Number:

AG15112

### GenBank Accession Number:

BC018044

### GeneID (NCBI):

22884

### UNIPROT ID:

Q9Y2I8

### Full Name:

WD repeat domain 37

### Calculated MW:

494 aa, 55 kDa

### Observed MW:

55-60 kDa

### Purification Method:

Antigen affinity purification

### Recommended Dilutions:

WB 1:500-1:1000

IHC 1:50-1:500

## Applications

### Tested Applications:

WB, IHC, ELISA

### Cited Applications:

IHC

### Species Specificity:

human, mouse, rat

### Cited Species:

human, mouse

**Note-IHC: suggested antigen retrieval with TE buffer pH 9.0; (\*) Alternatively, antigen retrieval may be performed with citrate buffer pH 6.0**

### Positive Controls:

WB : mouse brain tissue, rat brain tissue

IHC : mouse brain tissue,

## Background Information

The function of WDR37 remains largely unknown. Catalog#20916-1-AP is a rabbit polyclonal antibody raised against the full-length of human WDR37. The MW of this protein is 55 kDa, and this antibody specially recognises the 55 kDa protein.

## Notable Publications

Author	Pubmed ID	Journal	Application
Yakun Wu	31891481	ACS Nano	IHC
Taoyuan Yin	38304253	Front Immunol	IHC

## Storage

### Storage:

Store at -20°C. Stable for one year after shipment.

### Storage Buffer:

PBS with 0.02% sodium azide and 50% glycerol pH 7.3.

Aliquoting is unnecessary for -20°C storage

\*\*\* 20ul sizes contain 0.1% BSA

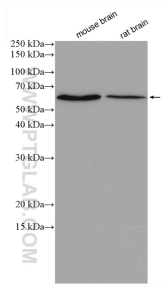
For technical support and original validation data for this product please contact:

T: 1 (888) 4PTGLAB (1-888-478-4522) (toll free in USA), or 1(312) 455-8498 (outside USA)

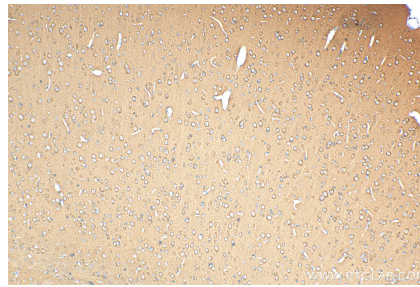
E: [proteintech@ptglab.com](mailto:proteintech@ptglab.com)  
W: [ptglab.com](http://ptglab.com)

This product is exclusively available under Proteintech Group brand and is not available to purchase from any other manufacturer.

## Selected Validation Data



Various lysates were subjected to SDS PAGE followed by western blot with 20916-1-AP (WDR37 antibody) at dilution of 1:800 incubated at room temperature for 1.5 hours.



Immunohistochemical analysis of paraffin-embedded mouse brain tissue slide using 20916-1-AP (WDR37 antibody) at dilution of 1:200 (under 10x lens). Heat mediated antigen retrieval with Tris-EDTA buffer (pH 9.0).