

For Research Use Only

LRRC17 Polyclonal antibody

Catalog Number: 20918-1-AP

Featured Product

2 Publications



Basic Information

Catalog Number:

20918-1-AP

Size:

150ul, Concentration: 350 ug/ml by Nanodrop and 280 ug/ml by Bradford method using BSA as the standard;

Source:

Rabbit

Isotype:

IgG

Immunogen Catalog Number:

AG15117

GenBank Accession Number:

BC027903

GeneID (NCBI):

10234

UNIPROT ID:

Q8N6Y2

Full Name:

leucine rich repeat containing 17

Calculated MW:

441 aa, 52 kDa

Observed MW:

52 kDa

Purification Method:

Antigen Affinity purified

Recommended Dilutions:

WB 1:200-1:1000

Applications

Tested Applications:

WB, ELISA

Cited Applications:

WB

Species Specificity:

human, mouse, rat

Cited Species:

human, mouse

Positive Controls:

WB: HeLa cells, mouse heart tissue, rat bone marrow tissue, rat spleen tissue, rat thymus tissue

Background Information

Leucine-rich repeat-containing protein 17 (LRRC17) is an LRR protein predominantly expressed by osteoblasts. LRRC17 acts as a negative regulator of receptor activator of NF-kappaB ligand (RANKL)-induced osteoclast differentiation (PMID: 19336404). It has been reported that low plasma level of LRRC17 is an independent risk factor for osteoporotic fractures (PMID: 27355564).

Notable Publications

Author	Pubmed ID	Journal	Application
Da Song	33986831	Exp Ther Med	WB
Fei Liu	33865167	Redox Biol	WB

Storage

Storage:

Store at -20°C. Stable for one year after shipment.

Storage Buffer:

PBS with 0.02% sodium azide and 50% glycerol pH 7.3.

Aliquoting is unnecessary for -20°C storage

*** 20ul sizes contain 0.1% BSA

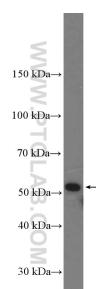
For technical support and original validation data for this product please contact:

T: 1 (888) 4PTGLAB (1-888-478-4522) (toll free in USA), or 1(312) 455-8498 (outside USA)

E: proteintech@ptglab.com
W: ptglab.com

This product is exclusively available under Proteintech Group brand and is not available to purchase from any other manufacturer.

Selected Validation Data



HeLa cells were subjected to SDS PAGE followed by western blot with 20918-1-AP (LRRC17 Antibody) at dilution of 1:300 incubated at room temperature for 1.5 hours.