

For Research Use Only

# LRRC17 Polyclonal antibody, PBS Only

Catalog Number: 20918-1-PBS

Featured Product



## Basic Information

**Catalog Number:**

20918-1-PBS

**Size:**

100ug, Concentration: 1 mg/ml by Nanodrop;

**Source:**

Rabbit

**Isotype:**

IgG

**Immunogen Catalog Number:**

AG15117

**GenBank Accession Number:**

BC027903

**GeneID (NCBI):**

10234

**UNIPROT ID:**

Q8N6Y2

**Full Name:**

leucine rich repeat containing 17

**Calculated MW:**

441 aa, 52 kDa

**Observed MW:**

52 kDa

**Purification Method:**

Antigen Affinity purified

## Applications

**Tested Applications:**

WB, Indirect ELISA

**Species Specificity:**

human, mouse, rat

## Background Information

Leucine-rich repeat-containing protein 17 (LRRC17) is an LRR protein predominantly expressed by osteoblasts. LRRC17 acts as a negative regulator of receptor activator of NF-kappaB ligand (RANKL)-induced osteoclast differentiation (PMID: 19336404). It has been reported that low plasma level of LRRC17 is an independent risk factor for osteoporotic fractures (PMID: 27355564).

## Storage

**Storage:**

Store at -80°C.

**Storage Buffer:**

PBS Only

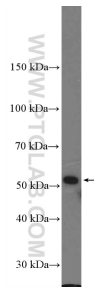
For technical support and original validation data for this product please contact:

T: 1 (888) 4PTGLAB (1-888-478-4522) (toll free in USA), or 1(312) 455-8498 (outside USA)

E: [proteintech@ptglab.com](mailto:proteintech@ptglab.com)  
W: [ptglab.com](http://ptglab.com)

This product is exclusively available under Proteintech Group brand and is not available to purchase from any other manufacturer.

## Selected Validation Data



HeLa cells were subjected to SDS PAGE followed by western blot with 20918-1-AP (LRRC17 Antibody) at dilution of 1:300 incubated at room temperature for 1.5 hours. This data was developed using the same antibody clone with 20918-1-PBS in a different storage buffer formulation.