

For Research Use Only

LAMC1 Polyclonal antibody

Catalog Number: 20928-1-AP



Basic Information

Catalog Number: 20928-1-AP	GenBank Accession Number: BC015586	Purification Method: Antigen affinity purification
Size: 150ul , Concentration: 300 µg/ml by Nanodrop and 240 µg/ml by Bradford method using BSA as the standard;	GeneID (NCBI): 3915	Recommended Dilutions: WB 1:500-1:1000
Source: Rabbit	Full Name: laminin, gamma 1 (formerly LAMB2)	IP 0.5-4.0 ug for IP and 1:500-1:2000 for WB
Isotype: IgG	Calculated MW: 178 kDa	
Immunogen Catalog Number: AG14674	Observed MW: 220 kDa, 178 kDa	

Applications

Tested Applications: IP, WB, ELISA	Positive Controls:
Species Specificity: human	WB : DU 145 cells, HeLa cells, A431 cells
	IP : DU 145 cells,

Background Information

Storage

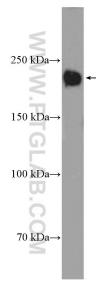
Storage:
Store at -20°C. Stable for one year after shipment.
Storage Buffer:
PBS with 0.02% sodium azide and 50% glycerol pH 7.3.
Aliquoting is unnecessary for -20°C storage

*** 20ul sizes contain 0.1% BSA

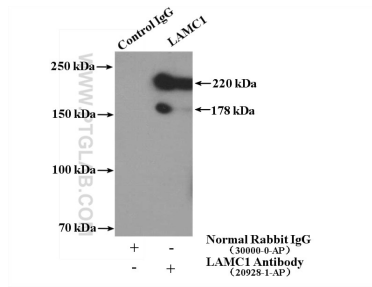
For technical support and original validation data for this product please contact:
T: 1 (888) 4PTGLAB (1-888-478-4522) (toll free in USA), or 1(312) 455-8498 (outside USA) E: proteintech@ptglab.com
W: ptglab.com

This product is exclusively available under Proteintech Group brand and is not available to purchase from any other manufacturer.

Selected Validation Data



DU 145 cells were subjected to SDS PAGE followed by western blot with 20928-1-AP (LAMC1 Antibody) at dilution of 1:600 incubated at room temperature for 1.5 hours.



IP Result of anti-LAMC1 (IP:20928-1-AP, 4ug; Detection:20928-1-AP 1:1000) with DU 145 cells lysate 3600ug.