

For Research Use Only

FBXL20 Polyclonal antibody

Catalog Number:20949-1-AP



Basic Information

| | | |
|---|---|---|
| Catalog Number: 20949-1-AP | GenBank Accession Number: BC007557 | Purification Method: Antigen affinity purification |
| Size: 150ul , Concentration: 370 ug/ml by Nanodrop; | GeneID (NCBI): 84961 | Recommended Dilutions: WB: 1:1000-1:4000 IF/ICC: 1:200-1:800 |
| Source: Rabbit | UNIPROT ID: Q96IG2 | |
| Isotype: IgG | Full Name: F-box and leucine-rich repeat protein 20 | |
| Immunogen Catalog Number: AG15071 | Calculated MW: 436 aa, 48 kDa | |
| | Observed MW: 48 kDa | |

Applications

| | |
|--|--|
| Tested Applications: WB, IF/ICC, ELISA | Positive Controls: |
| Species Specificity: human | WB : MCF-7 cells, IF/ICC : MCF-7 cells, |

Background Information

FBXL20 (F-box and leucine-rich repeat protein 20) is a member of the F-box protein family, which plays a crucial role in the ubiquitin-proteasome system. FBXL20 acts as a substrate recognition component of the SCF (Skp1-Cul1-F-box) ubiquitin ligase complex, targeting specific proteins for ubiquitination and subsequent degradation. This protein is involved in cell cycle regulation, signal transduction, and maintenance of protein homeostasis. Abnormal expression of FBXL20 has been implicated in various diseases, including cancer and neurodegenerative disorders. Research also suggests that FBXL20 may regulate the degradation of 4-1BB, an important immune stimulator, through ubiquitination. (PMID: 25593308, PMID: 27502938, PMID: 35112462)

Storage

Storage:
Store at -20°C. Stable for one year after shipment.
Storage Buffer:
PBS with 0.02% sodium azide and 50% glycerol, pH7.3
Aliquoting is unnecessary for -20°C storage

*** 20ul sizes contain 0.1% BSA

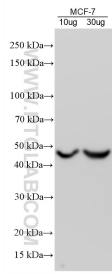
For technical support and original validation data for this product please contact:

T: 1 (888) 4PTGLAB (1-888-478-4522) (toll free in USA), or 1(312) 455-8498 (outside USA)

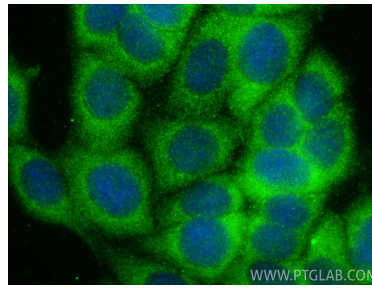
E: proteintech@ptglab.com
W: ptglab.com

This product is exclusively available under Proteintech Group brand and is not available to purchase from any other manufacturer.

Selected Validation Data



MCF-7 cells were subjected to SDS PAGE followed by western blot with 20949-1-AP (FBXL20 antibody) at dilution of 1:2000 incubated at room temperature for 1.5 hours.



Immunofluorescent analysis of (-20°C Methanol) fixed MCF-7 cells using FBXL20 antibody (20949-1-AP) at dilution of 1:400 and CoraLite® 488-Conjugated Goat Anti-Rabbit IgG(H+L) (SA00013-2).