

For Research Use Only

FBXL20 Polyclonal antibody, PBS Only

Catalog Number: 20949-1-PBS



Basic Information

Catalog Number: 20949-1-PBS	GenBank Accession Number: BC007557	Purification Method: Antigen affinity purification
Size: 100ug, Concentration: 1 mg/ml by Nanodrop;	GeneID (NCBI): 84961	
Source: Rabbit	UNIPROT ID: Q961G2	
Isotype: IgG	Full Name: F-box and leucine-rich repeat protein 20	
Immunogen Catalog Number: AG15071	Calculated MW: 436 aa, 48 kDa	
	Observed MW: 48 kDa	

Applications

Tested Applications:
WB, Indirect ELISA

Species Specificity:
human

Background Information

FBXL20 (F-box and leucine-rich repeat protein 20) is a member of the F-box protein family, which plays a crucial role in the ubiquitin-proteasome system. FBXL20 acts as a substrate recognition component of the SCF (Skp1-Cul1-F-box) ubiquitin ligase complex, targeting specific proteins for ubiquitination and subsequent degradation. This protein is involved in cell cycle regulation, signal transduction, and maintenance of protein homeostasis. Abnormal expression of FBXL20 has been implicated in various diseases, including cancer and neurodegenerative disorders. Research also suggests that FBXL20 may regulate the degradation of 4-1BB, an important immune stimulator, through ubiquitination. (PMID: 25593308, PMID: 27502938, PMID: 35112462)

Storage

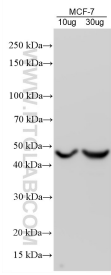
Storage:
Store at -80°C.

Storage Buffer:
PBS only, pH7.3

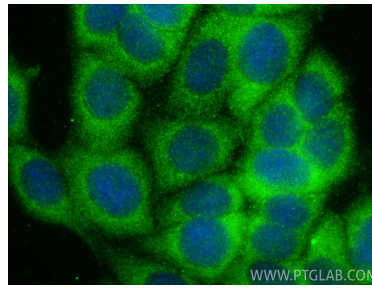
For technical support and original validation data for this product please contact:
T: 1 (888) 4PTGLAB (1-888-478-4522) (toll free in USA), or 1(312) 455-8498 (outside USA) E: proteintech@ptglab.com
W: ptglab.com

This product is exclusively available under Proteintech Group brand and is not available to purchase from any other manufacturer.

Selected Validation Data



MCF-7 cells were subjected to SDS PAGE followed by western blot with 20949-1-AP (FBXL20 antibody) at dilution of 1:2000 incubated at room temperature for 1.5 hours. This data was developed using the same antibody clone with 20949-1-PBS in a different storage buffer formulation.



Immunofluorescent analysis of (-20°C Methanol) fixed MCF-7 cells using FBXL20 antibody (20949-1-AP) at dilution of 1:400 and CoraLite® 488-Conjugated Goat Anti-Rabbit IgG(H+L) (SA00013-2). This data was developed using the same antibody clone with 20949-1-PBS in a different storage buffer formulation.