

For Research Use Only

ABHD14B Polyclonal antibody

Catalog Number: 20952-1-AP



Basic Information

Catalog Number: 20952-1-AP	GenBank Accession Number: BC007234	Purification Method: Antigen affinity purification
Size: 150ul , Concentration: 500 ug/ml by Nanodrop;	GeneID (NCBI): 84836	Recommended Dilutions: WB 1:500-1:2400
Source: Rabbit	UNIPROT ID: Q96IU4	IHC 1:20-1:200
Isotype: IgG	Full Name: abhydrolase domain containing 14B	IF/ICC 1:50-1:500
Immunogen Catalog Number: AG15097	Calculated MW: 210 aa, 22 kDa	
	Observed MW: 22-25 kDa	

Applications

Tested Applications:
WB, IHC, IF/ICC, ELISA

Species Specificity:
human, mouse, rat

Note-IHC: suggested antigen retrieval with **TE buffer pH 9.0; (*)** Alternatively, antigen retrieval may be performed with **citrate buffer pH 6.0**

Positive Controls:

WB : L02 cells, mouse small intestine tissue

IHC : human prostate hyperplasia tissue, human spleen tissue

IF/ICC : HepG2 cells,

Storage

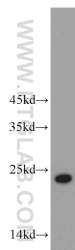
Storage:
Store at -20°C. Stable for one year after shipment.
Storage Buffer:
PBS with 0.02% sodium azide and 50% glycerol pH 7.3.
Aliquoting is unnecessary for -20°C storage

*** 20ul sizes contain 0.1% BSA

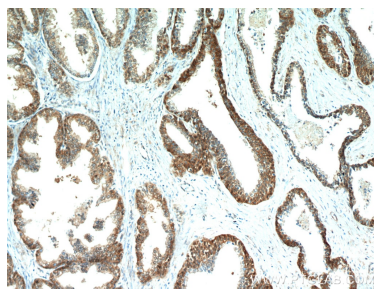
For technical support and original validation data for this product please contact:
T: 1 (888) 4PTGLAB (1-888-478-4522) (toll free in USA), or 1(312) 455-8498 (outside USA)
E: proteintech@ptglab.com
W: ptglab.com

This product is exclusively available under Proteintech Group brand and is not available to purchase from any other manufacturer.

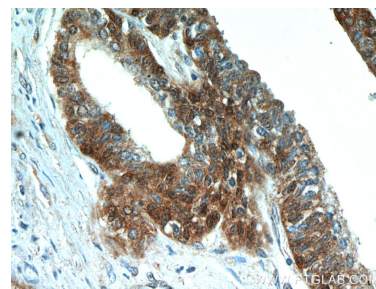
Selected Validation Data



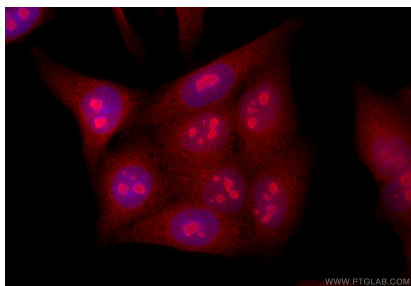
L02 cells were subjected to SDS PAGE followed by western blot with 20952-1-AP (ABHD14B antibody) at dilution of 1:400 incubated at room temperature for 1.5 hours.



Immunohistochemical analysis of paraffin-embedded human prostate hyperplasia using 20952-1-AP (ABHD14B antibody) at dilution of 1:50 (under 10x lens).



Immunohistochemical analysis of paraffin-embedded human prostate hyperplasia using 20952-1-AP (ABHD14B antibody) at dilution of 1:50 (under 40x lens).



Immunofluorescent analysis of (4% PFA) fixed HepG2 cells using ABHD14B antibody (20952-1-AP) at dilution of 1:200 and CoraLite®594-Conjugated Goat Anti-Rabbit IgG(H+L) (SA00013-4).