

For Research Use Only

# ABHD14B Polyclonal antibody, PBS Only

Catalog Number: 20952-1-PBS



## Basic Information

**Catalog Number:**

20952-1-PBS

**Size:**

100ug, Concentration: 1 mg/ml by Nanodrop;

**Source:**

Rabbit

**Isotype:**

IgG

**Immunogen Catalog Number:**

AG15097

**GenBank Accession Number:**

BC007234

**GeneID (NCBI):**

84836

**UNIPROT ID:**

Q96IU4

**Full Name:**

abhydrolase domain containing 14B

**Calculated MW:**

210 aa, 22 kDa

**Observed MW:**

22-25 kDa

**Purification Method:**

Antigen affinity purification

## Applications

**Tested Applications:**

WB, IHC, IF/ICC, Indirect ELISA

**Species Specificity:**

human, mouse, rat

## Storage

**Storage:**

Store at -80°C.

**Storage Buffer:**

PBS only, pH7.3

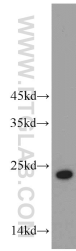
For technical support and original validation data for this product please contact:

T: 1 (888) 4PTGLAB (1-888-478-4522) (toll free in USA), or 1(312) 455-8498 (outside USA)

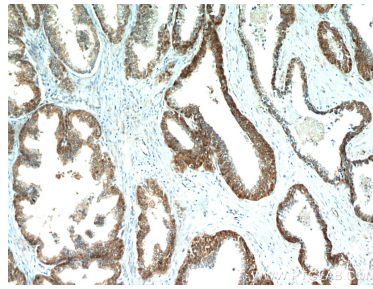
E: [proteintech@ptglab.com](mailto:proteintech@ptglab.com)  
W: [ptglab.com](http://ptglab.com)

This product is exclusively available under Proteintech Group brand and is not available to purchase from any other manufacturer.

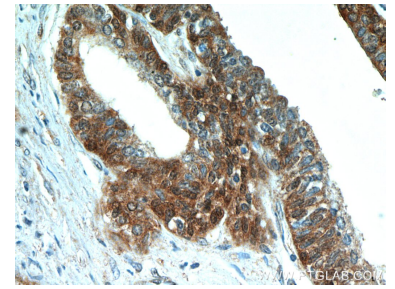
## Selected Validation Data



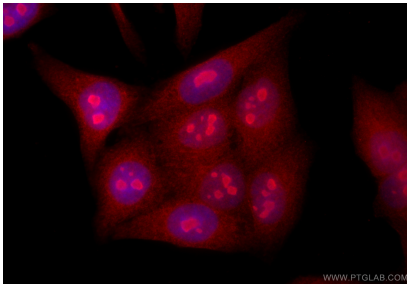
L02 cells were subjected to SDS PAGE followed by western blot with 20952-1-AP (ABHD14B antibody) at dilution of 1:400 incubated at room temperature for 1.5 hours. This data was developed using the same antibody clone with 20952-1-PBS in a different storage buffer formulation.



Immunohistochemical analysis of paraffin-embedded human prostate hyperplasia using 20952-1-AP (ABHD14B antibody) at dilution of 1:50 (under 10x lens). This data was developed using the same antibody clone with 20952-1-PBS in a different storage buffer formulation.



Immunohistochemical analysis of paraffin-embedded human prostate hyperplasia using 20952-1-AP (ABHD14B antibody) at dilution of 1:50 (under 40x lens). This data was developed using the same antibody clone with 20952-1-PBS in a different storage buffer formulation.



Immunofluorescent analysis of (4% PFA) fixed HepG2 cells using ABHD14B antibody (20952-1-AP) at dilution of 1:200 and CoraLite®594-Conjugated Goat Anti-Rabbit IgG(H+L) (SA00013-4). This data was developed using the same antibody clone with 20952-1-PBS in a different storage buffer formulation.