

For Research Use Only

INSC Polyclonal antibody

Catalog Number: 20973-1-AP

1 Publications



Basic Information

Catalog Number: 20973-1-AP	GenBank Accession Number: NM_001031853	Purification Method: Antigen affinity purification
Size: 150ul , Concentration: 550 µg/ml by Nanodrop and 367 µg/ml by Bradford method using BSA as the standard;	GeneID (NCBI): 387755	Recommended Dilutions: WB 1:500-1:2000 IHC 1:20-1:200 IF 1:10-1:100
Source: Rabbit	Full Name: inscuteable homolog (Drosophila)	
Isotype: IgG	Calculated MW: 63 kDa	
	Observed MW: 54 kDa	

Applications

Tested Applications:

IF, IHC, WB, ELISA

Cited Applications:

ChIP

Species Specificity:

human, mouse, rat

Note-IHC: suggested antigen retrieval with TE buffer pH 9.0; (*) Alternatively, antigen retrieval may be performed with citrate buffer pH 6.0

Positive Controls:

WB : mouse liver tissue, mouse kidney tissue

IHC : human kidney tissue, human liver tissue

IF : HeLa cells,

Background Information

INSC may function as an adapter linking the Par3 complex to the GPSM1/GPSM2 complex. It is involved in spindle orientation during mitosis it may regulate cell proliferation and differentiation in the developing nervous system. INSC may play a role in the asymmetric division of fibroblasts and participate in the process of stratification of the squamous epithelium. The antibody can recognize isoform 1, 2, 4, 5 of INSC.

Notable Publications

Author	Pubmed ID	Journal	Application
Bhavana Gupta	34433050	Cell Rep	ChIP

Storage

Storage:

Store at -20°C. Stable for one year after shipment.

Storage Buffer:

PBS with 0.02% sodium azide and 50% glycerol pH 7.3.

Aliquoting is unnecessary for -20°C storage

*** 20ul sizes contain 0.1% BSA

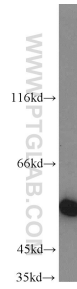
For technical support and original validation data for this product please contact:

T: 1 (888) 4PTGLAB (1-888-478-4522) (toll free in USA), or 1(312) 455-8498 (outside USA)

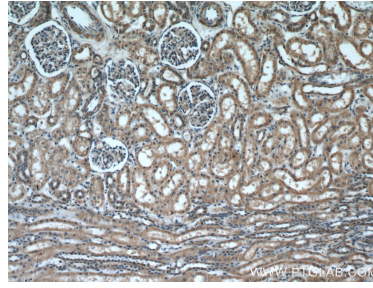
E: proteintech@ptglab.com
W: ptglab.com

This product is exclusively available under Proteintech Group brand and is not available to purchase from any other manufacturer.

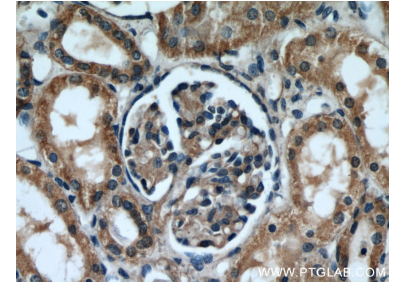
Selected Validation Data



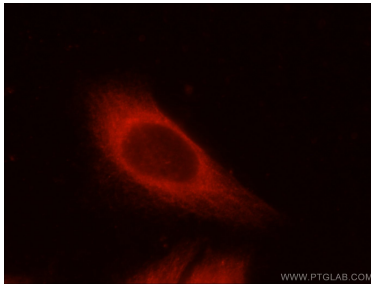
mouse liver tissue were subjected to SDS PAGE followed by western blot with 20973-1-AP (INSC antibody) at dilution of 1:1000 incubated at room temperature for 1.5 hours.



Immunohistochemical analysis of paraffin-embedded human kidney using 20973-1-AP (INSC antibody) at dilution of 1:50 (under 10x lens).



Immunohistochemical analysis of paraffin-embedded human kidney using 20973-1-AP (INSC antibody) at dilution of 1:50 (under 40x lens).



Immunofluorescent analysis of HeLa cells using 20973-1-AP (INSC antibody) at dilution of 1:25 and Rhodamine-Goat anti-Rabbit IgG.