

For Research Use Only

# INSC Polyclonal antibody, PBS Only

Catalog Number: 20973-1-PBS



## Basic Information

<b>Catalog Number:</b> 20973-1-PBS	<b>GenBank Accession Number:</b> NM_001031853	<b>Purification Method:</b> Antigen affinity purification
<b>Size:</b> 100ug , Concentration: 1 mg/ml by Nanodrop;	<b>GeneID (NCBI):</b> 387755	
<b>Source:</b> Rabbit	<b>UNIPROT ID:</b> Q1MX18	
<b>Isotype:</b> IgG	<b>Full Name:</b> inscuteable homolog (Drosophila)	
	<b>Calculated MW:</b> 63 kDa	
	<b>Observed MW:</b> 54 kDa	

## Applications

**Tested Applications:**  
WB, IHC, IF/ICC, Indirect ELISA

**Species Specificity:**  
human, mouse, rat

## Background Information

INSC may function as an adapter linking the Par3 complex to the GPSM1/GPSM2 complex. It is involved in spindle orientation during mitosis it may regulate cell proliferation and differentiation in the developing nervous system. INSC may play a role in the asymmetric division of fibroblasts and participate in the process of stratification of the squamous epithelium. The antibody can recognize isoform1, 2,4,5 of INSC.

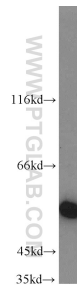
## Storage

**Storage:**  
Store at -80°C.  
**Storage Buffer:**  
PBS only, pH7.3

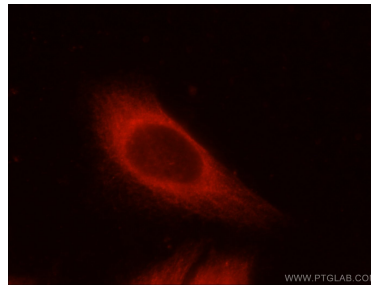
For technical support and original validation data for this product please contact:  
T: 1 (888) 4PTGLAB (1-888-478-4522) (toll free in USA), or 1(312) 455-8498 (outside USA)      E: [proteintech@ptglab.com](mailto:proteintech@ptglab.com)  
W: [ptglab.com](http://ptglab.com)

**This product is exclusively available under Proteintech Group brand and is not available to purchase from any other manufacturer.**

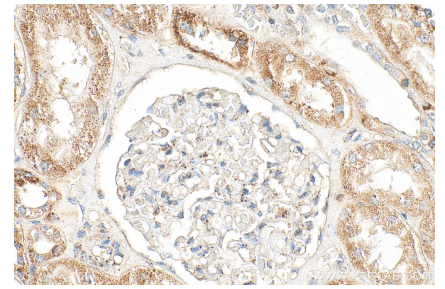
## Selected Validation Data



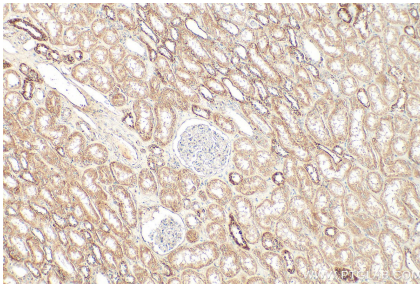
mouse liver tissue were subjected to SDS PAGE followed by western blot with 20973-1-AP (INSC antibody) at dilution of 1:1000 incubated at room temperature for 1.5 hours. This data was developed using the same antibody clone with 20973-1-PBS in a different storage buffer formulation.



Immunofluorescent analysis of HeLa cells using 20973-1-AP (INSC antibody) at dilution of 1:25 and Rhodamine-Goat anti-Rabbit IgG. This data was developed using the same antibody clone with 20973-1-PBS in a different storage buffer formulation.



Immunohistochemical analysis of paraffin-embedded human kidney tissue slide using 20973-1-AP (INSC antibody) at dilution of 1:200 (under 40x lens). Heat mediated antigen retrieval with Tris-EDTA buffer (pH 9.0). This data was developed using the same antibody clone with 20973-1-PBS in a different storage buffer formulation.



Immunohistochemical analysis of paraffin-embedded human kidney tissue slide using 20973-1-AP (INSC antibody) at dilution of 1:200 (under 10x lens). Heat mediated antigen retrieval with Tris-EDTA buffer (pH 9.0). This data was developed using the same antibody clone with 20973-1-PBS in a different storage buffer formulation.