

For Research Use Only

# RAG1 Polyclonal antibody

Catalog Number: 20977-1-AP



## Basic Information

<b>Catalog Number:</b> 20977-1-AP	<b>GenBank Accession Number:</b> NM_000448	<b>Purification Method:</b> Antigen affinity purification
<b>Size:</b> 150ul , Concentration: 1100 ug/ml by Nanodrop;	<b>GeneID (NCBI):</b> 5896	<b>Recommended Dilutions:</b> WB 1:500-1:2000
<b>Source:</b> Rabbit	<b>UNIPROT ID:</b> P15918	
<b>Isotype:</b> IgG	<b>Full Name:</b> recombination activating gene 1	
	<b>Calculated MW:</b> 119 kDa	
	<b>Observed MW:</b> 110-120 kDa	

## Applications

<b>Tested Applications:</b> WB, ELISA	<b>Positive Controls:</b> WB : mouse thymus tissue, rat thymus tissue
<b>Species Specificity:</b> human, mouse, rat	

## Background Information

Recombination-activating gene (RAG) proteins include RAG1 and RAG2, which are crucial for Ig and T lymphocyte receptor (TCR) fragment rearrangement and are responsible for DNA recognition and cleavage at specific sequences. Mutations in RAG1 result in the complete or partial loss of recombinant enzyme activity, in unbalanced variable-diversity-joining (VDJ) recombination, and in the impairment of T and B lymphocyte development at the early stages.

## Storage

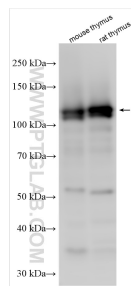
**Storage:**  
Store at -20°C. Stable for one year after shipment.  
**Storage Buffer:**  
PBS with 0.02% sodium azide and 50% glycerol pH 7.3.  
Aliquoting is unnecessary for -20°C storage

\*\*\* 20ul sizes contain 0.1% BSA

For technical support and original validation data for this product please contact:  
T: 1 (888) 4PTGLAB (1-888-478-4522) (toll free in USA), or 1(312) 455-8498 (outside USA)  
E: [proteintech@ptglab.com](mailto:proteintech@ptglab.com)  
W: [ptglab.com](http://ptglab.com)

This product is exclusively available under Proteintech Group brand and is not available to purchase from any other manufacturer.

## Selected Validation Data



Various lysates were subjected to SDS PAGE followed by western blot with 20977-1-AP (RAG1 antibody) at dilution of 1:1000 incubated at room temperature for 1.5 hours.