

For Research Use Only

# Raptor Polyclonal antibody, PBS Only

Catalog Number: 20984-1-PBS

Featured Product



## Basic Information

**Catalog Number:**

20984-1-PBS

**Size:**

100ug, Concentration: 1 mg/ml by Nanodrop;

**Source:**

Rabbit

**Isotype:**

IgG

**GenBank Accession Number:**

NM\_020761

**GeneID (NCBI):**

57521

**UNIPROT ID:**

Q8N122

**Full Name:**

raptor

**Calculated MW:**

149 kDa

**Observed MW:**

130-150 kDa

**Purification Method:**

Antigen affinity purification

## Applications

**Tested Applications:**

WB, IHC, IF/ICC, IP, Indirect ELISA

**Species Specificity:**

human, mouse

## Background Information

RPTOR, also named as KIAA1303 and RAPTOR belongs to the WD repeat RAPTOR family. It is involved in the control of the mammalian target of rapamycin complex 1 (mTORC1) activity which regulates cell growth and survival, and autophagy in response to nutrient and hormonal signals; functions as a scaffold for recruiting mTORC1 substrates. mTORC1 is activated in response to growth factors or amino-acids. Amino-acid-signaling to mTORC1 is mediated by Rag GTPases, which cause amino-acid-induced relocalization of mTOR within the endomembrane system. Activated mTORC1 up-regulates protein synthesis by phosphorylating key regulators of mRNA translation and ribosome synthesis. mTORC1 phosphorylates EIF4EBP1 and releases it from inhibiting the elongation initiation factor 4E (eIF4E). mTORC1 phosphorylates and activates S6K1 at 'Thr-389', which then promotes protein synthesis by phosphorylating PDCD4 and targeting it for degradation. The antibody is specific to RPTOR.

## Storage

**Storage:**

Store at -80°C.

**Storage Buffer:**

PBS only, pH7.3

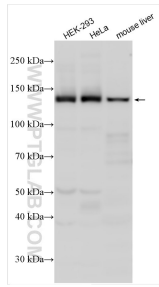
For technical support and original validation data for this product please contact:

T: 1 (888) 4PTGLAB (1-888-478-4522) (toll free in USA), or 1(312) 455-8498 (outside USA)

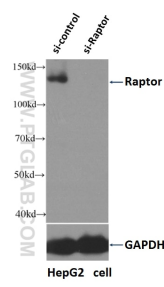
E: [proteintech@ptglab.com](mailto:proteintech@ptglab.com)  
W: [ptglab.com](http://ptglab.com)

**This product is exclusively available under Proteintech Group brand and is not available to purchase from any other manufacturer.**

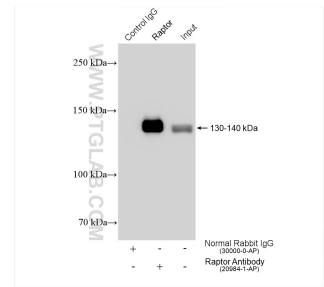
## Selected Validation Data



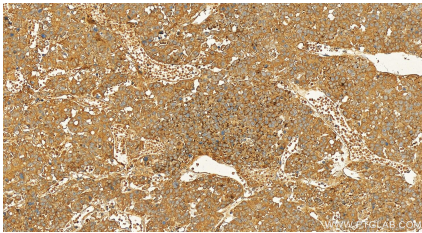
Various lysates were subjected to SDS PAGE followed by western blot with 20984-1-AP (Raptor antibody) at dilution of 1:6000 incubated at room temperature for 1.5 hours. This data was developed using the same antibody clone with 20984-1-PBS in a different storage buffer formulation.



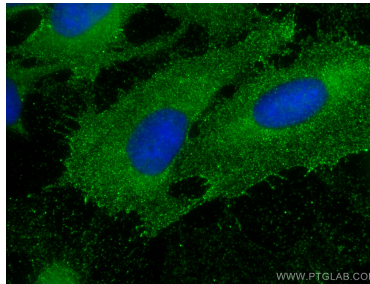
WB result of Raptor antibody (20984-1-AP, 1:500) with si-control and si-Raptor transfected HepG2 cells. This data was developed using the same antibody clone with 20984-1-PBS in a different storage buffer formulation.



IP result of anti-Raptor (IP:20984-1-AP, 4ug; Detection:20984-1-AP 1:4000) with HEK-293 cells lysate 1400 ug. This data was developed using the same antibody clone with 20984-1-PBS in a different storage buffer formulation.



Immunohistochemical analysis of paraffin-embedded human hepatocellular carcinoma slide using 20984-1-AP (Raptor antibody) at dilution of 1:200 (under 20x lens). Heat mediated antigen retrieval with Tris-EDTA buffer (pH 9.0). This data was developed using the same antibody clone with 20984-1-PBS in a different storage buffer formulation.



Immunofluorescent analysis of (-20°C Methanol) fixed U2OS cells using Raptor antibody (20984-1-AP) at dilution of 1:200 and CoraLite®488-Conjugated AffiniPure Goat Anti-Rabbit IgG(H+L). This data was developed using the same antibody clone with 20984-1-PBS in a different storage buffer formulation.