

For Research Use Only

DEPDC6/Deptor Polyclonal antibody

Catalog Number: 20985-1-AP

8 Publications



Basic Information

Catalog Number:

20985-1-AP

Size:

150ul, Concentration: 900 ug/ml by Nanodrop and 813 ug/ml by Bradford method using BSA as the standard;

Source:

Rabbit

Isotype:

IgG

GenBank Accession Number:

NM_022783

GeneID (NCBI):

64798

UNIPROT ID:

Q8TB45

Full Name:

DEP domain containing 6

Calculated MW:

46 kDa

Observed MW:

40-45 kDa

Purification Method:

Antigen affinity purification

Recommended Dilutions:

WB 1:500-1:2000

IHC 1:50-1:500

IF/ICC 1:200-1:800

Applications

Tested Applications:

WB, IHC, IF/ICC, ELISA

Cited Applications:

WB, IF, IHC

Species Specificity:

human, mouse, rat

Cited Species:

human, mouse

Note-IHC: suggested antigen retrieval with TE buffer pH 9.0; (*) Alternatively, antigen retrieval may be performed with citrate buffer pH 6.0

Positive Controls:

WB : HeLa cells, A2780 cells, COLO 320 cells, HEK-293 cells, MCF-7 cells

IHC : human liver cancer tissue, human thyroid cancer tissue

IF/ICC : HepG2 cells,

Background Information

DEPDC6, also named as DEPTOR, was identified as a novel mTOR-interacting protein whose over-expression in certain cell types represents a new mechanism for activating PI3K/Akt signaling and promoting cell survival. It negative regulator of the mTORC1 and mTORC2 signaling pathways. DEPDC6 inhibits the kinase activity of both complexes. The antibody is specific to DEPDC6.

Notable Publications

Author	Pubmed ID	Journal	Application
Yue Zhai	29940800	Autophagy	WB
Mengmeng Cheng	27224922	Oncotarget	WB
Xiaoling Yu	27179948	Gene	WB

Storage

Storage:

Store at -20°C. Stable for one year after shipment.

Storage Buffer:

PBS with 0.02% sodium azide and 50% glycerol pH 7.3.

Aliquoting is unnecessary for -20°C storage

*** 20ul sizes contain 0.1% BSA

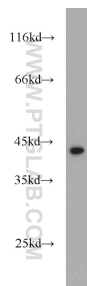
For technical support and original validation data for this product please contact:

T: 1 (888) 4PTGLAB (1-888-478-4522) (toll free in USA), or 1(312) 455-8498 (outside USA)

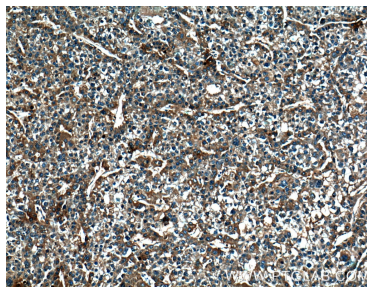
E: proteintech@ptglab.com
W: ptglab.com

This product is exclusively available under Proteintech Group brand and is not available to purchase from any other manufacturer.

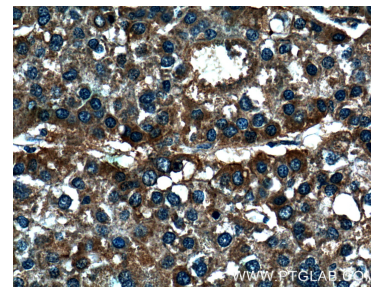
Selected Validation Data



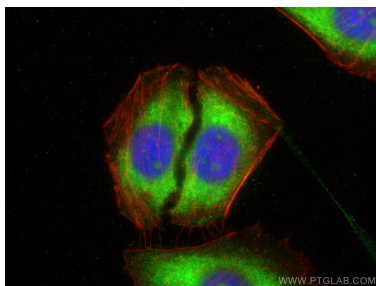
HeLa cells were subjected to SDS PAGE followed by western blot with 20985-1-AP (DEPDC6/Deptor antibody) at dilution of 1:1000 incubated at room temperature for 1.5 hours.



Immunohistochemical analysis of paraffin-embedded human liver cancer tissue slide using 20985-1-AP (DEPDC6/Deptor antibody at dilution of 1:200 (under 10x lens).



Immunohistochemical analysis of paraffin-embedded human liver cancer tissue slide using 20985-1-AP (DEPDC6/Deptor antibody at dilution of 1:200 (under 40x lens).



Immunofluorescent analysis of (-20°C Ethanol) fixed HepG2 cells using DEPDC6/Deptor antibody (20985-1-AP) at dilution of 1:400 and CoraLite®488-Conjugated Goat Anti-Rabbit IgG(H+L), CL594-phalloidin (red).