

For Research Use Only

Cyclin T1 Polyclonal antibody, PBS Only

Catalog Number: 20992-1-PBS



Basic Information

Catalog Number:

20992-1-PBS

Size:

100ug, Concentration: 1 mg/ml by Nanodrop;

Source:

Rabbit

Isotype:

IgG

GenBank Accession Number:

NM_001240

GeneID (NCBI):

904

UNIPROT ID:

O60563

Full Name:

cyclin T1

Calculated MW:

81 kDa

Observed MW:

81 kDa

Purification Method:

Antigen affinity purification

Applications

Tested Applications:

WB, IHC, IF/ICC, Indirect ELISA

Species Specificity:

human

Background Information

CCNT1, also named as CytT1, belongs to the cyclin family and Cyclin C subfamily. It is a regulatory subunit of the cyclin-dependent kinase pair (CDK9/cyclin-T1) complex which also called positive transcription elongation factor B (P-TEFb). In case of HIV or SIV infections, CCNT1 binds to the transactivation domain of the viral nuclear transcriptional activator, Tat, thereby increasing Tat's affinity for the transactivating response RNA element (TAR RNA). CCNT1 serves as an essential cofactor for Tat, by promoting RNA Pol II activation, allowing transcription of viral genes. The antibody is specific to CCNT1.

Storage

Storage:

Store at -80°C.

Storage Buffer:

PBS Only

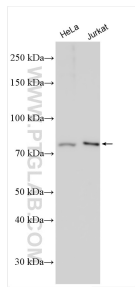
For technical support and original validation data for this product please contact:

T: 1 (888) 4PTGLAB (1-888-478-4522) (toll free in USA), or 1(312) 455-8498 (outside USA)

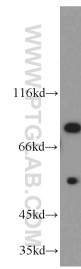
E: proteintech@ptglab.com
W: ptglab.com

This product is exclusively available under Proteintech Group brand and is not available to purchase from any other manufacturer.

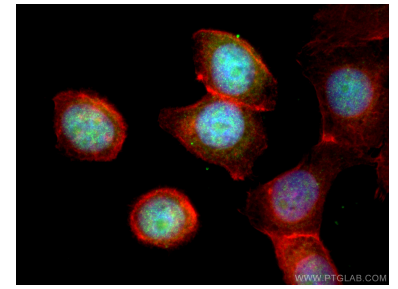
Selected Validation Data



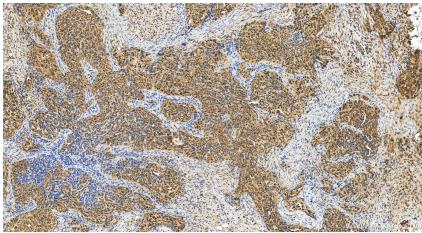
Various lysates were subjected to SDS PAGE followed by western blot with 20992-1-AP (Cyclin T1 antibody) at dilution of 1:8000 incubated at room temperature for 1.5 hours. This data was developed using the same antibody clone with 20992-1-PBS in a different storage buffer formulation.



K-562 cells were subjected to SDS PAGE followed by western blot with 20992-1-AP (Cyclin T1 antibody) at dilution of 1:300 incubated at room temperature for 1.5 hours. This data was developed using the same antibody clone with 20992-1-PBS in a different storage buffer formulation.



Immunofluorescent analysis of (4% PFA) fixed MCF-7 cells using Cyclin T1 antibody (20992-1-AP) at dilution of 1:200 and CoraLite®488-Conjugated AffiniPure Goat Anti-Rabbit IgG(H+L). This data was developed using the same antibody clone with 20992-1-PBS in a different storage buffer formulation.



Immunohistochemical analysis of paraffin-embedded human ovary cancer tissue slide using 20992-1-AP (Cyclin T1 antibody) at dilution of 1:200 (under 20x lens). Heat mediated antigen retrieval with Tris-EDTA buffer (pH 9.0). This data was developed using the same antibody clone with 20992-1-PBS in a different storage buffer formulation.