

For Research Use Only

# BZW2 Polyclonal antibody

Catalog Number: 21001-1-AP

Featured Product

2 Publications



## Basic Information

### Catalog Number:

21001-1-AP

### Size:

150ul , Concentration: 400 ug/ml by Nanodrop and 267 ug/ml by Bradford method using BSA as the standard;

### Source:

Rabbit

### Isotype:

IgG

### Immunogen Catalog Number:

AG15126

### GenBank Accession Number:

BC003056

### GeneID (NCBI):

28969

### UNIPROT ID:

Q9Y6E2

### Full Name:

basic leucine zipper and W2 domains

2

### Calculated MW:

419 aa, 48 kDa

### Observed MW:

45-48 kDa

### Purification Method:

Antigen affinity purification

### Recommended Dilutions:

WB 1:500-1:2000

## Applications

### Tested Applications:

WB, ELISA

### Cited Applications:

WB, IHC

### Species Specificity:

human

### Cited Species:

human

### Positive Controls:

WB : HeLa cells,

## Notable Publications

Author	Pubmed ID	Journal	Application
Ya-Qin Wang	36608137	Sci Adv	WB,IHC
Dong-Dong Cheng	28791373	Oncol Rep	

## Storage

### Storage:

Store at -20°C. Stable for one year after shipment.

### Storage Buffer:

PBS with 0.02% sodium azide and 50% glycerol pH 7.3.

Aliquoting is unnecessary for -20°C storage

\*\*\* 20ul sizes contain 0.1% BSA

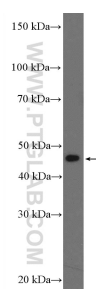
For technical support and original validation data for this product please contact:

T: 1 (888) 4PTGLAB (1-888-478-4522) (toll free in USA), or 1(312) 455-8498 (outside USA)

E: [proteintech@ptglab.com](mailto:proteintech@ptglab.com)  
W: [ptglab.com](http://ptglab.com)

This product is exclusively available under Proteintech Group brand and is not available to purchase from any other manufacturer.

## Selected Validation Data



HeLa cells were subjected to SDS PAGE followed by western blot with 21001-1-AP (BZW2 Antibody) at dilution of 1:1000 incubated at room temperature for 1.5 hours.