

For Research Use Only

PLA2G4A Polyclonal antibody

Catalog Number: 21004-1-AP



Basic Information

Catalog Number:

21004-1-AP

Size:

150ul , Concentration: 200 ug/ml by Nanodrop;

Source:

Rabbit

Isotype:

IgG

Immunogen Catalog Number:

AG15202

GenBank Accession Number:

BC114340

GeneID (NCBI):

5321

UNIPROT ID:

P47712

Full Name:

phospholipase A2, group IVA (cytosolic, calcium-dependent)

Calculated MW:

749 aa, 85 kDa

Observed MW:

100 kDa

Purification Method:

Antigen affinity purification

Recommended Dilutions:

WB 1:500-1:1000

Applications

Tested Applications:

WB, ELISA

Species Specificity:

human, mouse

Positive Controls:

WB : HeLa cells, MG-63 cells, NIH/3T3 cells, RAW 264.7 cells

Background Information

PLA2G4A, also named cPLA2 (cytosolic phospholipase A2), is a highly conserved and widely expressed enzyme that can promote lipid mediator production. It is present in the cytosol of resting cells and upon activation by a variety of agonists, undergoes Ca^{++} -directed translocation to perinuclear membranes. PLA2G4A plays a major role in membrane lipid remodeling and biosynthesis of lipid mediators of the inflammatory response. It has been reported that the activity and expression levels of PLA2G4A are upregulated in several neurodegenerative diseases. It is a 749 amino acid, 85 kDa protein that migrates at 100-112 kDa in polyacrylamide gels (PMID: 17459165).

Storage

Storage:

Store at $-20^{\circ}C$. Stable for one year after shipment.

Storage Buffer:

PBS with 0.02% sodium azide and 50% glycerol pH 7.3.

Aliquoting is unnecessary for $-20^{\circ}C$ storage

*** 20ul sizes contain 0.1% BSA

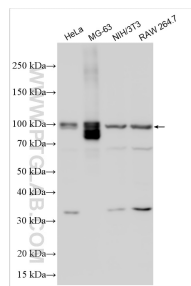
For technical support and original validation data for this product please contact:

T: 1 (888) 4PTGLAB (1-888-478-4522) (toll free in USA), or 1(312) 455-8498 (outside USA)

E: proteintech@ptglab.com
W: ptglab.com

This product is exclusively available under Proteintech Group brand and is not available to purchase from any other manufacturer.

Selected Validation Data



Various lysates were subjected to SDS PAGE followed by western blot with 21004-1-AP (PLA2G4A antibody) at dilution of 1:500 incubated at room temperature for 1.5 hours.