

For Research Use Only

Thyroid Hormone Receptor beta Polyclonal antibody



Catalog Number: 21007-1-AP

1 Publications

Basic Information

Catalog Number:

21007-1-AP

Size:

150ul, Concentration: 650 µg/ml by Nanodrop;

Source:

Rabbit

Isotype:

IgG

Immunogen Catalog Number:

AG15210

GenBank Accession Number:

BC106929

GeneID (NCBI):

7068

UNIPROT ID:

P10828

Full Name:

thyroid hormone receptor, beta (erythroblastic leukemia viral (v-erb-a) oncogene homolog 2, avian)

Calculated MW:

476 aa, 54 kDa

Observed MW:

50 kDa

Purification Method:

Antigen affinity purification

Recommended Dilutions:

WB 1:1000-1:6000

Applications

Tested Applications:

WB, ELISA

Cited Applications:

IF, WB

Species Specificity:

Mouse

Cited Species:

human, mouse

Positive Controls:

WB: mouse retina tissue, mouse eye tissue

Background Information

Thyroid hormone receptor beta (THRβ), also known as ERBA2, NR1A2, and THR1, belongs to the nuclear hormone receptor family and NR1 subfamily. THRβ is a nuclear hormone receptor that can act as a repressor or activator of transcription. Moreover, THRβ is also a high-affinity receptor for thyroid hormones, including triiodothyronine and thyroxine. THRβ is the most abundant THR isoform in the liver but is also expressed in other tissues and mediates the effects of THs on hepatic carbohydrate and lipid metabolism (PMID: 34884910).

Notable Publications

Author	Pubmed ID	Journal	Application
Yan-Hang Wang	38250049	Theranostics	WB,IF

Storage

Storage:

Store at -20°C. Stable for one year after shipment.

Storage Buffer:

PBS with 0.02% sodium azide and 50% glycerol pH 7.3.

Aliquoting is unnecessary for -20°C storage

*** 20ul sizes contain 0.1% BSA

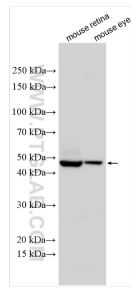
For technical support and original validation data for this product please contact:

T: 1 (888) 4PTGLAB (1-888-478-4522) (toll free in USA), or 1(312) 455-8498 (outside USA)

E: proteintech@ptglab.com
W: ptglab.com

This product is exclusively available under Proteintech Group brand and is not available to purchase from any other manufacturer.

Selected Validation Data



Various lysates were subjected to SDS PAGE followed by western blot with 21007-1-AP (Thyroid Hormone Receptor beta antibody) at dilution of 1:3000 incubated at room temperature for 1.5 hours.