

For Research Use Only

ENTPD8 Polyclonal antibody

Catalog Number: 21010-1-AP



Basic Information

Catalog Number:

21010-1-AP

Size:

150ul, Concentration: 450 ug/ml by Nanodrop;

Source:

Rabbit

Isotype:

IgG

Immunogen Catalog Number:

AG15224

GenBank Accession Number:

BC141810

GeneID (NCBI):

377841

UNIPROT ID:

Q5MY95

Full Name:

ectonucleoside triphosphate diphosphohydrolase 8

Calculated MW:

495 aa, 54 kDa

Observed MW:

70 kDa, 54 kDa

Purification Method:

Antigen affinity purification

Recommended Dilutions:

WB 1:500-1:1000

Applications

Tested Applications:

WB, ELISA

Species Specificity:

human, rat, mouse

Positive Controls:

WB : 37°C incubated HepG2 cells, mouse liver tissue, rat liver tissue

Background Information

ENTPD8 (Ectonucleoside triphosphate diphosphohydrolase 8) is also named as E-NTPDase 8, NTPDase8 and belongs to the GDA1/CD39 NTPase family. NTPDase8 is the canalicular ecto-ATPase/ATPDase and is responsible for the main hepatic NTP-Dase activity (PMID:17095758). The estimated molecular mass of expressed human ENTPD8 is 70-85 kDa which is N-glycosylated and after deglycosylation, it has a nearly identical molecular mass, 54 kDa (PMID:16752921;7781224). It has 2 isoforms produced by alternative splicing with the molecular weight of 54 kDa and 49 kDa. This antibody is specific to ENTPD8.

Storage

Storage:

Store at -20°C. Stable for one year after shipment.

Storage Buffer:

PBS with 0.02% sodium azide and 50% glycerol pH 7.3.

Aliquoting is unnecessary for -20°C storage

*** 20ul sizes contain 0.1% BSA

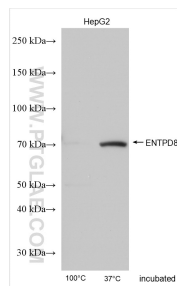
For technical support and original validation data for this product please contact:

T: 1 (888) 4PTGLAB (1-888-478-4522) (toll free in USA), or 1(312) 455-8498 (outside USA)

E: proteintech@ptglab.com
W: ptglab.com

This product is exclusively available under Proteintech Group brand and is not available to purchase from any other manufacturer.

Selected Validation Data



Various lysates were subjected to SDS PAGE followed by western blot with 21010-1-AP (ENTPD8 antibody) at dilution of 1:500 incubated at room temperature for 1.5 hours.