

For Research Use Only

KLF5 Polyclonal antibody

Catalog Number: 21017-1-AP

Featured Product

52 Publications



Basic Information

Catalog Number:

21017-1-AP

Size:

150ul, Concentration: 600 ug/ml by Nanodrop;

Source:

Rabbit

Isotype:

IgG

Immunogen Catalog Number:

AG15267

GenBank Accession Number:

BC042131

GeneID (NCBI):

688

UNIPROT ID:

Q13887

Full Name:

Kruppel-like factor 5 (intestinal)

Calculated MW:

457 aa, 51 kDa

Observed MW:

51-55 kDa

Purification Method:

Antigen affinity purification

Recommended Dilutions:

WB 1:5000-1:50000

IP 0.5-4.0 ug for 1.0-3.0 mg of total protein lysate

IHC 1:200-1:800

IF/ICC 1:200-1:800

Applications

Tested Applications:

WB, IHC, IF/ICC, IP, ELISA

Cited Applications:

WB, IHC, IF, IP, CoIP, ChIP

Species Specificity:

human, mouse, rat

Cited Species:

human, mouse, rat

Note-IHC: suggested antigen retrieval with TE buffer pH 9.0; (*) Alternatively, antigen retrieval may be performed with citrate buffer pH 6.0

Positive Controls:

WB: A549 cells, HeLa cells, Caco-2 cells, mouse colon tissue, human testis tissue, PC-3 cells, HT-1080 cells, mouse small intestine tissue, HCT 116 cells, COLO 320 cells, rat colon tissue

IP: HeLa cells,

IHC: human colon cancer tissue, mouse embryo tissue

IF/ICC: HeLa cells,

Background Information

KLF5, also known as BTEB2 and IKLF, is a member of the Krueppel-like transcription factor family. It is a transcription factor for SMemb/non-muscle myosin heavy chain-B (NMHC-B). It is a molecular marker of phenotypically modulated smooth-muscle cells. KLF5 seems to be a key element linking external stress and cardiovascular remodeling. This antibody detects the 50-60 kDa isoform 1 of KLF5. The antibody can recognize isoform 2 (33 kDa) and isoform 3 (18 kDa) too. 85 kDa, 95 kDa and 120 kDa of SUMOylated KLF5 were detected (PMID: 18500350).

Notable Publications

Author	Pubmed ID	Journal	Application
Yuehua Ma	30226614	Oncol Rep	WB,IHC,CoIP
Jian-Zhong Zhang	30322616	Biochem Biophys Res Commun	WB,IF
Xi Chen	33033902	Mol Biol Rep	WB,ChIP

Storage

Storage:

Store at -20°C. Stable for one year after shipment.

Storage Buffer:

PBS with 0.02% sodium azide and 50% glycerol pH 7.3.

Aliquoting is unnecessary for -20°C storage

*** 20ul sizes contain 0.1% BSA

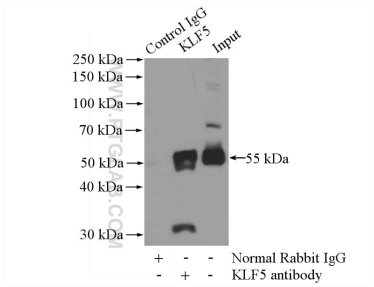
For technical support and original validation data for this product please contact:

T: 1 (888) 4PTGLAB (1-888-478-4522) (toll free in USA), or 1(312) 455-8498 (outside USA)

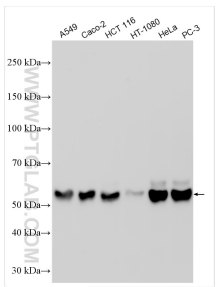
E: proteintech@ptglab.com
W: ptglab.com

This product is exclusively available under Proteintech Group brand and is not available to purchase from any other manufacturer.

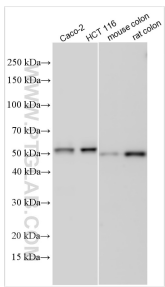
Selected Validation Data



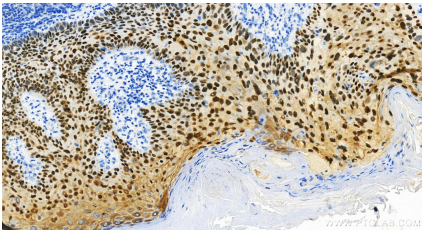
IP result of anti-KLF5 (IP:21017-1-AP, 4ug; Detection:21017-1-AP 1:500) with HeLa cells lysate 2800ug.



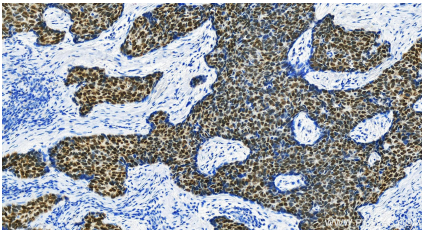
Various lysates were subjected to SDS PAGE followed by western blot with 21017-1-AP (KLF5 antibody) at dilution of 1:20000 incubated at room temperature for 1.5 hours.



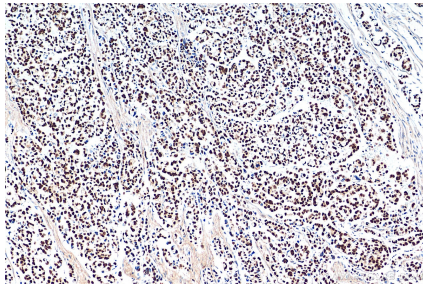
Various lysates were subjected to SDS PAGE followed by western blot with 21017-1-AP (KLF5 antibody) at dilution of 1:20000 incubated at room temperature for 1.5 hours.



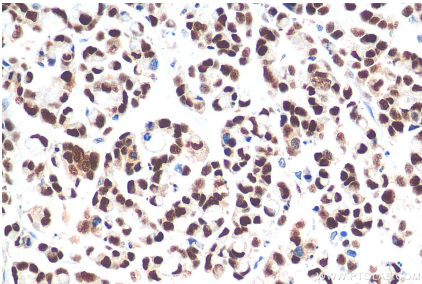
Immunohistochemical analysis of paraffin-embedded human bowen disease slide using 21017-1-AP (KLF5 antibody) at dilution of 1:4000 (under 20x lens). Heat mediated antigen retrieval with Tris-EDTA buffer (pH 9.0).



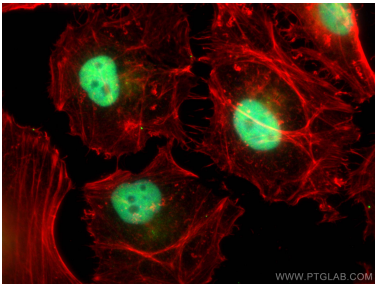
Immunohistochemical analysis of paraffin-embedded human bowen disease slide using 21017-1-AP (KLF5 antibody) at dilution of 1:4000 (under 20x lens). Heat mediated antigen retrieval with Tris-EDTA buffer (pH 9.0).



Immunohistochemical analysis of paraffin-embedded human colon cancer tissue slide using 21017-1-AP (KLF5 antibody) at dilution of 1:400 (under 10x lens). Heat mediated antigen retrieval with Tris-EDTA buffer (pH 9.0).



Immunohistochemical analysis of paraffin-embedded human colon cancer tissue slide using 21017-1-AP (KLF5 antibody) at dilution of 1:400 (under 40x lens). Heat mediated antigen retrieval with Tris-EDTA buffer (pH 9.0).



Immunofluorescent analysis of (4% PFA) fixed HeLa cells using KLF5 antibody (21017-1-AP) at dilution of 1:400 and CoraLite®488-Conjugated Goat Anti-Rabbit IgG(H+L) (SA00013-2), CL594-phalloidin (red).